

COOMBE HILL

Close the gate at the foot of the hill
and take the white path that is itself a beckoning.

That in spring, after rain, shines
against the new greens of the upland grass.

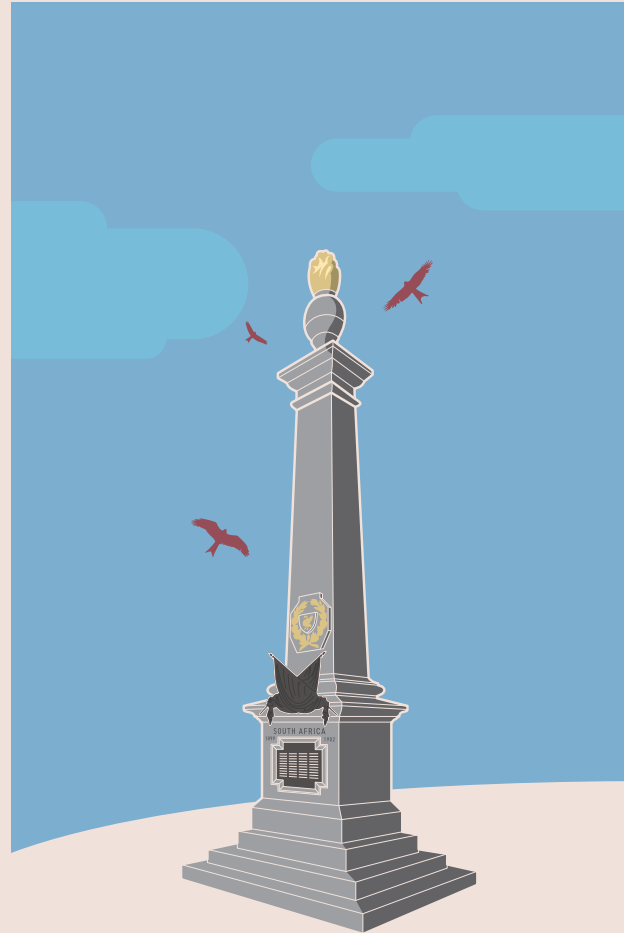
That pulls us up toward our monument that was
the first to give name to its losses.

That brings us out at the top of the combe,
eye-level with the kites and crows,
and that circles the hilltop where,
in high summer, we have stood and looked across
the cut gold of the vale.

The path that carries back through
the beechwood which gives its finest pages
in the burning autumn, and that is so old, this path.

Old as winter and which sets us down
on the road back to the town and the rooftops
and the fires of home.

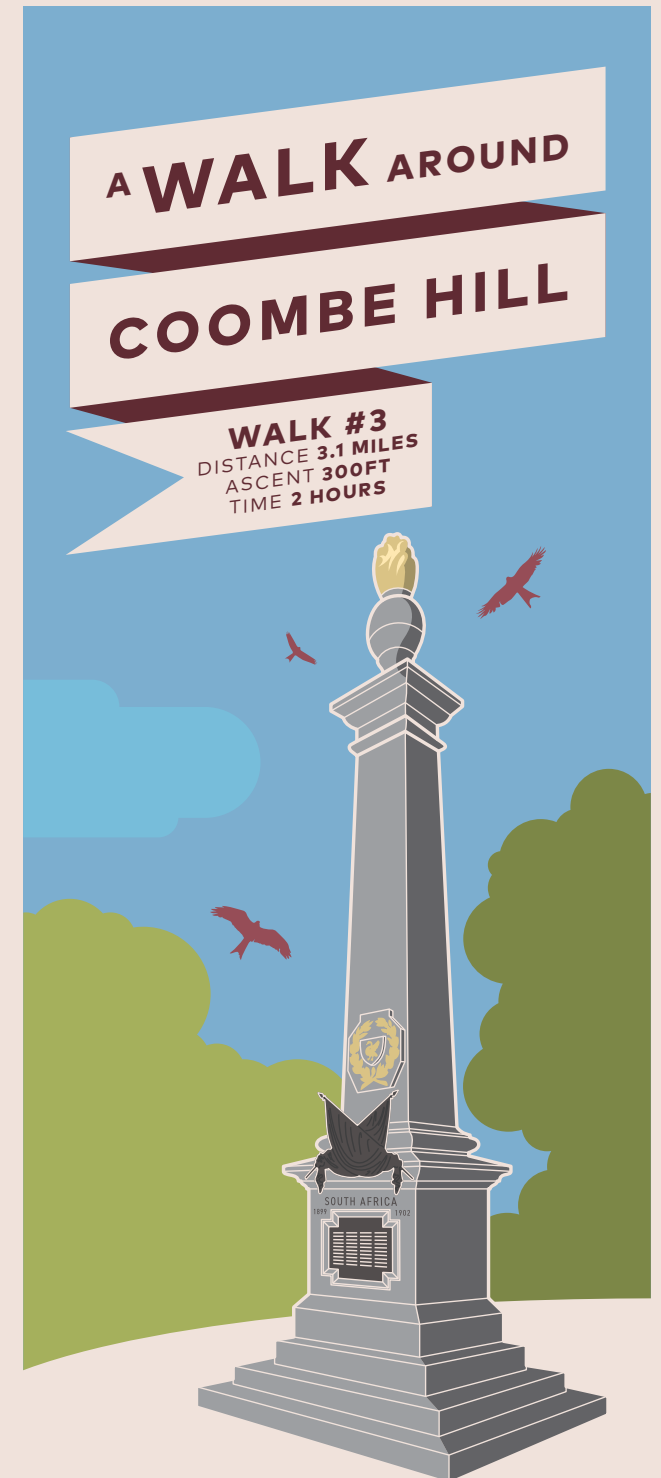
Will Burns, 2017
Local Poet



A walk up into the beautiful Chiltern Hills, with outstanding views across the vale from the Coombe Hill monument

Acknowledgments.

Thanks are due to Wendover Parish Council for their financial support. Thanks also to 22 Design for the design and printing (www.22design.co.uk.) Thanks to Will Burns for copywriting.



1

Clock Tower and Starting Point

Originally a small market hall built in 1842, the Clock Tower was gifted to the people of the village by the then Lord of the Manor, Mr. Abel Smith.

2

Ridgeway

Taking the chalk path along the scarp, you are walking along the ridgeway, one of the oldest paths in Britain allowing some wonderful views across the vale.

3

Boer War Monument

Stop and take in the breathtaking views commanded by the monument across the Aylesbury Vale. The first war monument in the country to specifically name the dead regardless of rank. From here you can see well into Oxfordshire to the west, and deep into Buckinghamshire to the north.

4

Coombe Hill Summit

The large summit of the hill is a perfect spot for picnics. A walk around the top of the hill will almost certainly give excellent views of the local red kites as well as a glimpse down into the Chequers estate.

5

Bridleway

The bridleway back to Wendover has all the character of the ancient beech woods of the Chilterns. In autumn, the colours are at their most vivid.

2

5



3

4

Counties informations

On a clear day it is possible to see out across the vale from the viewing point at the monument and spot four counties. Buckinghamshire, Oxfordshire, Bedfordshire and Hertfordshire.

KEY

- ★ START END
- ➔ PATHWAY

