



# Wendover Arm News

*Newsletter of the Wendover Arm Trust*



*Issue 2009/3  
Autumn 2009*

*Price £1 where sold  
Free to Members*

## A Vacant Chair - Bob Wheel Resigns

### Bob's Letter says...

After a good deal of thought, I gave formal notice to Trust Council at our October meeting of my intention to stand down as Chairman. This will be effective from the first Council meeting after the AGM, when Trust Directors will elect a new Chairman.

I have long believed that any organisation is better off in the long run if its officers, especially the Chairman, do not stay in the position too long. There is a danger of staleness creeping in, and fresh enthusiasm and energy by others can be stifled as a result.

As a case in point, I cannot even say with certainty when I took up the office, it seems so long ago.

**I would be happier if we had already identified a new Chairman**, but I also feel that it would be wrong to delay the change any longer 'while we find a replacement'.

I first declared my intention to stand down earlier this year, and have already held fire for some time while we tried to find another Chairman.

**I do not want to resign as a Trust member**; in fact I am happy to remain on Council where I can devote more time along with the **Funding Committee** to the increasingly important task of **securing future funds for the restoration**.

**This is a good time to make a plea for someone to take on the Chairman's position.** You don't have to have had a huge amount of experience, just an ability to get on with people, and the motivation to help the project along. From experience we can probably expect no-one to put themselves forward, but it is possible that you know of someone else who would be an asset to the Trust in the position of Chairman. Do please let me (or any Trust

Director) know if you have someone in mind.

Let me take this opportunity to thank everyone who has helped the Trust in any of the various possible ways. It definitely helps to be Chairman when everyone

shares a common goal, and when everyone has a willingness to see the Arm restored. I can honestly say that I am proud to have been the representative of what is commonly regarded as a voluntary body operating to professional standards.

---

## Restoration Report

This is an extract from the restoration report to the AGM on Tuesday 21<sup>st</sup> Oct. read by **Restoration Director Roger Leishman**

The report covers progress since last year's AGM and, I am pleased to say, the year has been a **very successful** in that, with **two footbridges** completed and a **sixty metre** trial length of lining behind us since 2005, we have made **excellent progress** with lining the canal bed for Stage1, the first 341 metres from Drayton Beauchamp. It

is hoped to **complete Stage 1 around the turn of the year.**

Our learning curve is now over and we have resolved the

specification and method of working thus enabling us to plan and carry out the work as fast as we can subject to weather conditions.

Apart from weather, the main restraints to progress are a) completing pipe capping under banks that have to be replaced and left for a winter season to consolidate before

they can be profiled, b) placing spoil on the 45 degree banks above the coir rolls (made even more difficult when the weather is very dry) and the restrictive width of the dry bed making it difficult for excavators and dumpers to pass each other.

The use of tracked dumpers has been necessary because of the poor ground conditions during wet weather despite the extra cost. They are better for carrying ready-mix concrete that has to be unloaded by a digger and for carrying concrete blocks – this is due to their rectangular shape as opposed to the hopper shape of a wheeled dumper.

Because of the delay caused by waiting for banks to consolidate, **each of the six lining stages could take up to two years to complete** – a year pipe capping and a year lining. This implies a **completion date for Phase II**

**of 2019** unless it is possible to jump ahead with pipe capping and so be well ahead with consolidating the banks. The pipe route wanders from side to side at bends so jumping ahead with capping could block access to lining work thus cancelling out any advantage. This target date is also subject to funding.

Construction of a **concrete raft** at Little Tring for **cutting rolls of Bentomat** has been **very successful** – far better than working on muddy uneven ground.

**Investigations** at **Whitehouses** by Professor Timothy Peters and BW have resulted in **locating the position of the original pumping shaft** that leads down to the heading from Wilstone Reservoir and finding **historical information from records and local people.**



Roger Leishman

**The picture was taken from the site of the bund to be built at the end of stage 1 and shows how close we are to completing this stage**

On the financial front, £231,759 has been spent to date on Phase II.

Stage 1 has so far cost £110,608 against an estimate of £176,550.

Partly due to the long spell of recent fine weather and partly

due to Herts County Council allowing us to tip on their land near Bridge 4A, thus saving tipping costs, it is certain that **we will finish the stage well within budget.**



## **21<sup>st</sup> Anniversary**

Next year the **Wendover Arm Trust** will be 21 years old. Your council is keen to commemorate the occasion. The council has some ideas but would very much **like to hear from members**. If you have any ideas you would like to throw into the mix please email them to [chairman@wendoverarmthrust.co.uk](mailto:chairman@wendoverarmthrust.co.uk) or write C/O Fox Meadow, Water End Lane, Potten End, Berkhamstead, HP4 2SH.

## **100 Club Winners (October 2009)**

The 49<sup>th</sup> prize draw was held at the AGM on 21<sup>st</sup> Oct 2009 with 85 eligible shares. The winners were...

- 1<sup>st</sup> prize – SJ Bell - £102**
- 2<sup>nd</sup> prize – J Rowe - £43**
- 3<sup>rd</sup> prize – R Berry - £17**

## **Membership**

**Total Membership – 479**  
**Total Members – 727**

How's that?! Why such vastly different numbers? You ask. Well there are a number of family members as well as single members not to mention corporate members and honorary members

## **Newsletter Items**

Your Newsletter editor, Jon Kelly, is keen to hear from anyone who has any interesting items for future newsletters. If you have access to the web please e-mail to [newsletter@wendoverarmtrust.co.uk](mailto:newsletter@wendoverarmtrust.co.uk) or write C/O 25, Florey Gardens, High Street, Aylesbury HP20 1RW

## **Financial Report**

Any members who could not attend the AGM and would like to receive a copy of the 2008-2009 financial report can contact the treasurer at [treasurer@wendoverarmtrust.co.uk](mailto:treasurer@wendoverarmtrust.co.uk) and an electronic copy would be forwarded to them.

## **Gift Aid**

When a donation is made to charity it can be gift aided. That means that at no cost to the donor tax can be

reclaimed by the charity. By using this method we have £2206.63 reclaimable for the first half of this financial year.

---

## **Was There a Tragic Loss of Life on our Beautiful Canal?**

A Drayton Beauchamp family remembers an incident back when the canal was navigable where there was a party aboard a boat near the church. It seems things may have gone awry and the boat floundered with loss of life. Have you heard this story? Can you shed any light on it? There may have been a memorial on the canal at one time.

---

## **Barry and Beryl Martin Thanked for Long Service to Trust**

In a letter to Barry and Beryl read out at the AGM they were thanked for their long and multifaceted service to the Trust now that they have moved away from the area. In part the letter reads...

“To say that you have served on Trust Council for a long time would be an understatement. Normally, if we wanted to find

out when someone had joined or left Council, we would turn to you. Perhaps you could enlighten us!

How can we mark your long-term contribution in posts almost too many to mention? Membership Secretary, Gift-Aid Admin, Club 100, Newsletter Contributor, Trust Stand at Festivals and Rallies; the list goes on.

Trust Council would like to offer you the post of Vice President to the Wendover Arm Trust, effective immediately.

In addition, we would like to affix a plaque on one of the footbridges acknowledging the contribution both you and Beryl have made to the Trust's success over the years, with a similar plaque for you to have on your mantelpiece!

Thank you for all that you have done; it is recognised and appreciated.

---

### **In a Message from Membership – Katherine Deaney says Grace Period Reduced from Nine Months to Three**

The Wendover Arm Trust members are important for many reasons, subscription fees provide much needed income, and many of our members are volunteers either on Council, Restoration or sub committees like the Festival and Fundraising teams. We currently have **over 700 members**, which demonstrates the level of support when dealing with



public bodies, like local and County Councils as well as funding organisations.

In return for the annual subscription, members receive this quarterly newsletter to keep them updated with Trust activities. There are associated costs for printing and distribution of the newsletter which are paid out of Trust funds.

The vast **majority of members renew their subscriptions on time**, either by responding to a renewal request or by paying via annual standing order. However there are a small band of members who, for whatever reason have not paid their subs, but are still receiving this newsletter. At our recent AGM, considerable discussion was had with regard to the **current 9 month period of grace** that a member has to pay their subscription fees, before their membership lapses. It was agreed unanimously that **this time limit will be reduced to 3 months** with immediate effect. The aims and rules of the Trust has been updated accordingly.

If your membership is more than 2 months overdue, a final reminder will be sent soon with a month's window of opportunity to renew, or the membership will lapse, and the details removed from the database.

**Last but by no means least, thank you** to everyone for being a member of the Wendover Arm Trust, whether for a year or two or decades of support. If your personal details have changed, please let me know so we can send the newsletter to you.

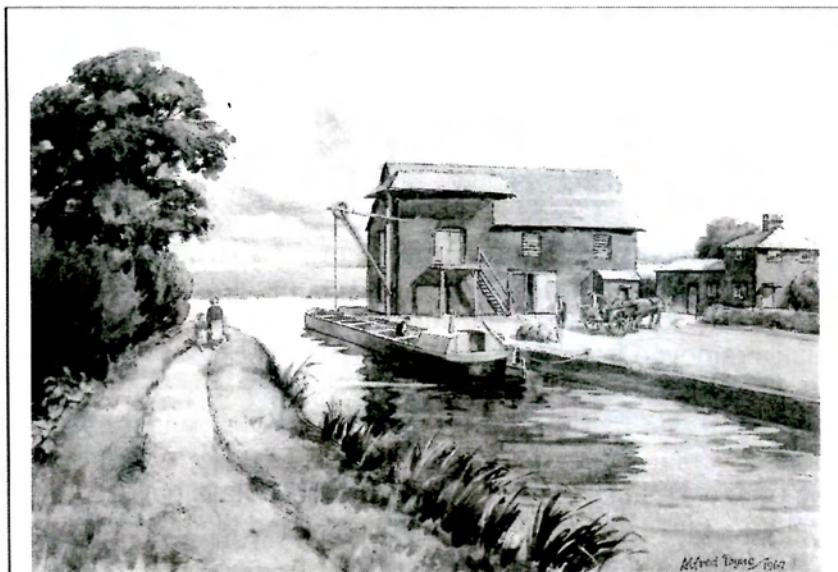
---

## Christmas Markets



The Wendover Arm Trust will be at the Wendover Christmas Market on **December 5<sup>th</sup>** and the Halton Christmas Market on **December 13<sup>th</sup>**.

Among the Trust range of merchandise will be greeting cards in the form of a print of the Wendover Warf as it would have looked at its heyday. It was painted by Mr. Brian Alfred Payne whose grandfather lived near the canal.



As well as this year's Christmas card bearing the image that won the recent photography competition.



The Wharf card comes individually and is priced at £1.50 each and can be purchased from Jill Pearce, the Trusts Sales Officer.

The Christmas card comes in packs of 10 complete with envelopes and again can be purchased from Jill Pearce at a cost of £3.95

For those wishing to order by post please add 50p post and packing for the wharf card and £1.20 for the pack of Christmas cards.

Please send your cheques made payable to the Wendover Arm Trust to:

Jill Pearce  
15 Halton Village  
Nr Aylesbury  
HP22 5NS

---

## Canal Building

### The Water Budget and Puddling

The **Wendover Arm** was built to bring spring water from the Chiltern Hills to feed the Tring Summit. This extract outlines the fundamental importance of this to canal engineering in general.

Canals may appear much simpler to engineer than they actually are, something that the unprepared promoter continually discovered in the Canal Age. The two most important requirements are: (1) **an adequate supply of water for the summit level**, and (2) **the canal must hold water and not leak**. Both of these requirements are almost automatically met for sea-level canals in wet areas of high water table. They are with the greatest difficulty met for a canal that strikes out cross-country and ascends hills.

Every canal has a **water budget**. Water is lost by leakage and evaporation, and with every boat that passes a lock. This water is generally supplied from the summit level of the canal. The summit level can be supplied naturally by runoff from precipitation, or artificially by pumping. All available streams to supply a summit reservoir must be gauged, and the reservoir must be large enough to even out the cycles of supply and consumption. The supply of the summit level is the most important factor in canal design. If the summit level is made higher to avoid tunnelling, water supply becomes more difficult. If the summit level is made lower to avoid water problems, the canal may be more circuitous or involve much tunnelling.

One of the secrets to making a canal hold water is the use of **puddling**. This does not mean slathering on a layer of clay and letting it dry, like some kind of mortar. Strong clay, in fact, is useless for puddling, since it absorbs great quantities of water, then cracks on drying out. Topsoil is equally useless, since not only do plant roots in it decay, but earthworms chew it and moles eat holes in it. Puddle is a compacted semiliquid mixture of loamy subsoil and coarse sand or fine gravel. Suitable puddling-stuff is worked with a spade, adding the correct limited amount of water, until it is homogeneous. This mixture is quite

impermeable to water, but must never be allowed to dry out.

Puddle is used to separate the water of a canal from porous strata, and is placed in ditches to prevent water from spreading away from the canal, and to stabilize embankments. Any embankment must be treated as a porous stratum, and puddle ditches are required on both sides down to the water table. Canals may be lined with puddle when necessary.

Extracted from: Notes on  
Canal History and  
Engineering

Composed by J. B. Calvert

---

## Give a Gift to a Loved One

Your generosity can be a superb gift for a friend or relative as well as making a difference to the canal restoration.

Just complete the gift form and send it to the address stated and we will send you (or directly to the recipient) a certificate acknowledging the gift

I enclose my cheque/PO for £ .....made payable to 'Wendover Arm Trust'  
YES! I would like to receive an email acknowledgement (to save on postage):  
My email address:

---

I'd rather have my acknowledgement posted and my sponsorship is over £10

---

I'm donating as a gift for someone else, so please put their name on the gift certificate.  
Their name is;

---

According to number of blocks the sponsor's name and location is published in our newsletter and website, or on a sponsor's plaque - e.g. J Smith, Tring  
I do **NOT** want the Wendover Arm Trust to show my name as a sponsor

---

My address is:  
Name:

---

Address:

---

Postcode:

---

I am a UK Taxpayer, and I want my donation to be Gift Aided so that the Wendover Arm Trust can claim an additional 28p for every £1 donated. My full address is as above.

---

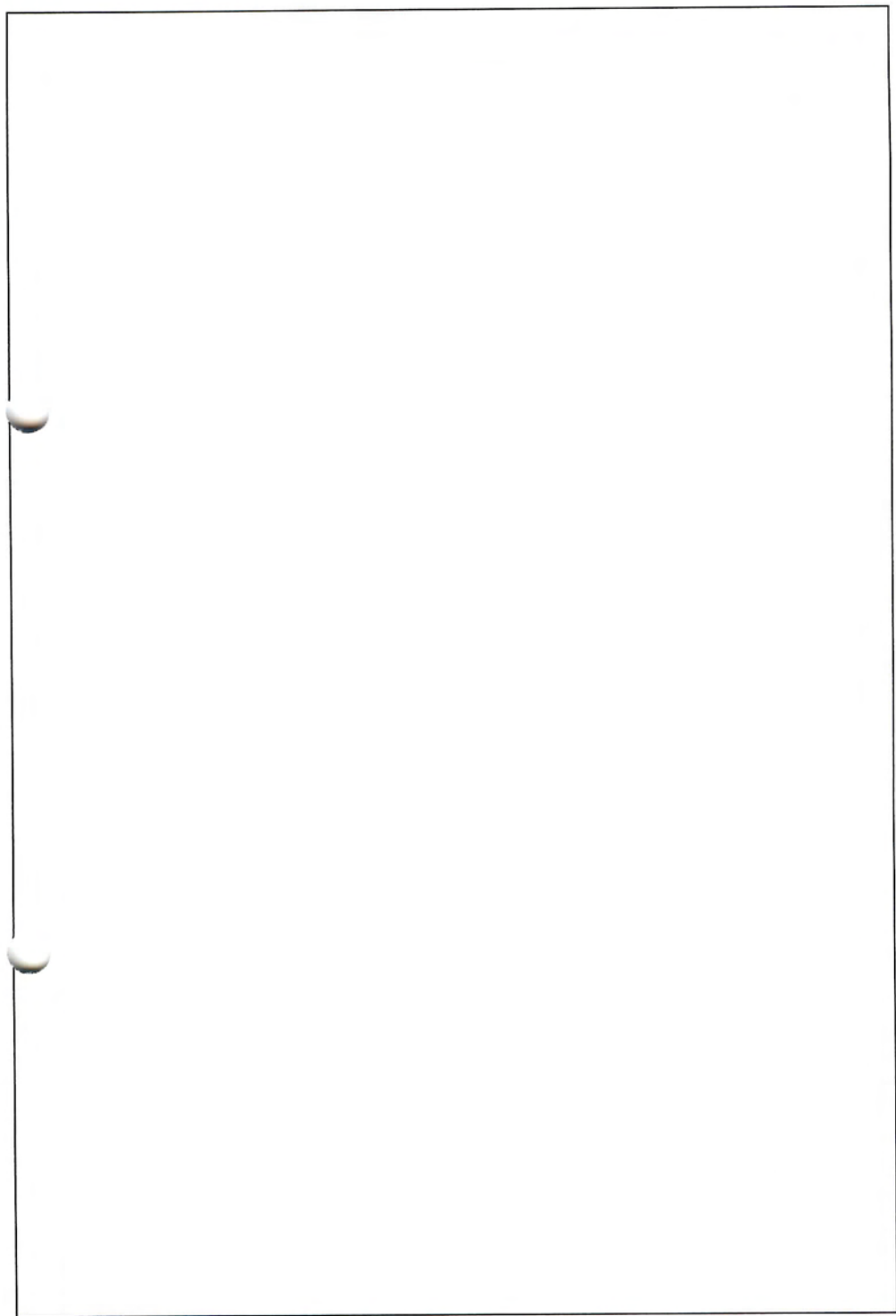
Signature for Gift Aid:

---

Please send to: FREEPOST BLOCKAID  
(Yes, that really is all you need to put on the envelope!)

Please tick this box if you would be happy for the trust to keep in touch with you about its activities (we won't pass on your details to anyone else except as required by UK law!)

Please tick this box if you are not already a trust member but would like more information on becoming one



## Who's Who

### Wendover Arm Trust Council

Chairman	<b>Vacant</b>		chairman@wendoverarmtrust.co.uk
Vice Chairman & Restoration Director	Roger Leishman	01442 874536	rleishman@ukgateway.net
Hon Sec	John Rowe	01442 862619	johnn.rowe@virgin.net
Treasurer	John Brooman	01296 623542	treasurer@wendoverarmtrust.co.uk
Restoration			
H&S Co-ordinator.	Ray Orth	01494 786868	ray.orth@btinternet.com (NEW!)
Fundraising Director	Bob Wheel	01525 381614	fundraising@wendoverarmtrust.co.uk
Publicity	Nigel Williams	01844 353927	publicity@wendoverarmtrust.co.uk
Newsletter Editor	Jon Kelly	07974855712	newsletter@wendoverarmtrust.co.uk
Membership/Gift Aid	Katherine Deaney	01442 246 523	membership@wendoverarmtrust.co.uk
Trust Archivist	Barry Martin	01296 630599	BMartinTurner@aol.com
Festival Chairman	Graeme Lockhart	01525 374761	festival@wendoverarmtrust.co.uk
BW Nominee			
IWA Nominee	Jenny Brice	01494 873298	jenny@johnbrice.co.uk
Minutes Secretary	Margaret Leishman	01442 874536	rleishman@ukgateway.net

#### Non-Council Officers

Trust Sales	Jill Pearce	01296 624472	sales@wendoverarmtrust
Trust Website	Robert Drury	01296 631121	robertjdrury@yahoo.co.uk

### Festival Committee

Graeme Lockhart (Chair), Graham and Rosemary Bennett, John Brooman, Lesley Deverill, Max Deverill, Andy Januszewski, Keith Jones, Denise Laxton, Dave and Jo Leeson, Bob Wheel, Dot Zasadzka

Contact: [festival@wendoverarmtrust.co.uk](mailto:festival@wendoverarmtrust.co.uk)

### Funding Committee

Bob Wheel (Chair), David Andrew, Rosemary Bennett, John Brooman, Peter Cleasby, James Clifton, Kevin Day, Robert Drury, Sue Hetherington, Roger Leishman, Ray Orth, John Rowe

Contact: [fundingraising@wendoverarmtrust.co.uk](mailto:fundingraising@wendoverarmtrust.co.uk)

### Restoration Committee

Roger Leishman (Chair), John Brooman, Eddie Evans, John Kearsley, Jon Kelly, Margaret Leishman, Ray Orth, Ron Pittaway, Bob Wheel,

Contact: via Roger Leishman (see above) or [restoration@wendoverarmtrust.co.uk](mailto:restoration@wendoverarmtrust.co.uk)

### General Contact Info

Website: [www.wendoverarmtrust.co.uk](http://www.wendoverarmtrust.co.uk)

Mail: c/o Fox Meadow, Water End Lane, Potten End, Berkhamsted HP4 2SH

Cover: New plaques fitted to Little Tring Bridge