

WENDOVER ARM NEWS

Newsletter of the Wendover Arm Trust



Issue No. 39
January 2003

Price 50p
Free to members

From the Wendover Arm Trust Articles of Association:

To promote the restoration of the Wendover Arm of the Grand Union Canal linking the town of Wendover in Buckinghamshire to the Grand Union Canal at Bulbourne Hertfordshire (hereinafter called 'The Waterway' which shall include all waterways, buildings, works and structures associated therewith) to good and navigable order and to maintain and improve The Waterway for the use and benefit of the public.

To promote the fullest use of The Waterway by all forms of waterborne traffic and for all forms of local amenity, tourist and recreational and water-related activities for the benefit of the public

To promote, and educate the public in, the history, use and associated wildlife of canals and inland waterways generally and of The Waterway in particular.

To restore, reconstruct, preserve and maintain canals and inland waterways and works and buildings auxiliary thereto generally provided that such objects shall be carried out in a manner beneficial to the public and recognised by the law of England as charitable.

Contributions to Wendover Arm News

Contributions are welcome on any topic related to the Wendover Arm, its construction, history, wildlife and restoration.

Letters, articles, photographs, drawings and maps are acceptable; all material will be acknowledged, credited if used and returned.

Please send any contributions to:

John Savage
WAT Newsletter Editor
16 Lakeside
TRING
Hertfordshire
HP23 5HN

Disclaimer

Views expressed in this newsletter are not necessarily those of the Wendover Arm Trust

FROM THE EDITOR

These are exciting times for the Trust and the Wendover Arm.

The Phase I restoration at Little Tring is progressing superbly and completion, due in 2004, is now in sight. The quality of the workmanship, both of our volunteers (so ably led by Roger Leishman) and of the Little Tring Bridge, is impressive and a wonderful advertisement for the Trust.

At the same time the new section of canal at Drayton Beauchamp, being constructed as part of the Highways Agency's A41 By-pass scheme, is taking shape and is due to be completed during 2003. This considerable investment of public money in building a navigable canal is a powerful statement that the Arm *IS* to be fully restored.

As if this were not enough, British Waterways are extending this new section of canal to beyond Drayton Bridge. This is an essential maintenance project to ensure the canal can cope with the additional run-off water from the new by-pass.

So, at the time of writing, three sections of the Arm are benefiting from investment simultaneously! All are covered in more detail in articles in this edition.

This leaves us with 'just' a mile of dry channel to re-line and a couple of unfortunate modern, unattractive and out-of-keeping bridges to deal with.....

This is where Dave Andrew, our new Fund Raising Director comes in. His objective is to find a way to finish the job within a reasonable time. Please read what he has to say in his article in this newsletter, in which he gives his thoughts on how this might be achieved. If you can help in any way, however small, return the enclosed questionnaire to Dave.

Don't forget to get the Festival dates in your diary and please sell all those Grand Draw tickets (and why not ask for some more.....). Remember, only one mile to re-line and two bridges.....!

JOHN SAVAGE

*Front Cover:
Wellonhead Bridge, Aston
Clinton, in January 2003, after
snow.*

Sir Roger Cork FCA, FICM, FIPM
(31st March 1947 - 21st October 2002)
President Wendover Arm Trust 1991- 2002

When our first President, Sir Kenneth Cork, died in October 1991, I wrote to his son inviting him to become our second President. Roger Cork immediately replied saying that he would be very pleased to "Follow in his father's footsteps".

Since he first became our President he has supported the Trust wholeheartedly. He has been present at all but one of the Canal Festivals and was a very regular attendee at the AGM. He was also very generous in his financial support of the Trust.

It is so sad that a person with so many personal achievements as Sir Roger had should die at such a young age - he was 55. He was an expert incorporate insolvency and an ebullient Lord Mayor. He followed very closely in the footsteps of his formidable father "the great liquidator" who was also Lord Mayor. Their firm, Cork Gully, in which he became a partner in 1970, was a very prominent name in the realms of insolvency for four decades.

Roger worked alongside his father from his youth and, in 1973, had to go to the High Court to overturn a decision that he too young, at 25, to be a liquidator of a collapsed company - Ickfield Development. Roger's business style was said to be much gentler and approachable than his father's, which could be frightening; but he could be just as effective. During the period of Harold Wilson's last term as Prime Minister, Roger negotiated an injection of government cash into the failing Fisher Bendix factory on Merseyside with Tony Benn, the industry minister, to keep the plant alive as a workers' co-operative.

He was the 669th Lord Mayor of London in 1996 and the Trust were very proud to be asked to parade a float in his Lord Mayor's Show - an event which I will remember for a long time to come. His motto was "Making Britain Even Greater". It was so sad that his wife, Barbara, had died only a few months before he took on that very important role. He really enjoyed his time as Lord Mayor and was responsible for raising £1.3 million for Cancer Research whilst in office. One of his achievements during that period was to complete a sponsored cycle ride from John O'Groats to Lands End, averaging 75 miles per day, no mean feat for one of such proportions.

When he was Lord Mayor he came to open the Annual Canal Festival on one of Grebe Canal Cruisers boats from the Pumping Station at Little Tring, complete in his ceremonial regalia and accompanied by one of his Sheriffs

On our last visit to his house at the Lee, near Great Missenden, Sheila and I were shown his memento of his time as Lord Mayor. Most men who have held this office have had a portrait painted of themselves, not so for Sir Roger, in the inglenook fireplace in his dining room stood a life-size bust, which had been carved out of wood. It was a marvellous piece of workmanship and such an excellent likeness. I believe it was made by a young lady who specialised in carving ships figureheads. Outside his front door stood an old red London Transport Double-decker bus, named "Corkies Bus" which he drove himself to various charity events.

His hobby was to sail in the South of France and one of the reasons why both he and his father accepted the presidency of the Trust was because the Wendover Arm was to again become the nearest navigable water to their dwellings.

He leaves two daughters and a son.

There was a Service of Commemoration to Sir Roger at St Paul's Cathedral on 22nd January 2003

Roger Lewis



*Roger (as Aldermanic Sheriff) and Barbara
[Photograph courtesy of The Lord Mayor's Show Official Programme
1996]*

RESTORATION NEWS

Work is still going to plan, despite the very wet ground conditions. Thanks are due to our volunteer labour force and to the Waterways Recovery Group (WRG) 'Bit in the Middle' (BITM) who, at their October weekend with the Trust, laid 80 metres of excellent new footpath from Little Tring Bridge to the stoplock. Materials (Geotex underlay and road stone) were supplied free of charge by Dacorum Borough Council.

When BITM had a cancellation at Sleaford in November they asked if they could come to Little Tring instead and were welcomed with open arms. As well as clearing another 50 yards of scrub and stumping at Whitehouses they helped complete a base and wall section. They are planing two visits during 2003, in addition to helping at the Festival.

The base of the towpath wall between Little Tring Bridge and the stoplock has now been cast as far as possible without interfering with access under the bridge for ready-mix lorries. The next stage will be to excavate this length of infill material prior to laying Bentomat lining, which will be affixed to the walls by nail gun. This will be the first lining laid by

our team and will present new skills to master. The Bentomat is very heavy and manoeuvring it into place will need to be very carefully done! British Waterways has had problems with joints when laying Bentomat, indicating that these must receive careful attention. Roger Leishman is therefore proposing to lay a 6" deep, 2 to 3 foot wide, transverse strip of concrete over each joint, which are at 4.5 metre intervals. Two excavators will be used for this work, one for bulk excavation and the other for final grading and trimming. When this task is complete the towpath side wall can be completed under bridge, linking the two already completed sections together.

To protect the lining from temperature extremes, until this section is re-watered in 2004, consideration is being given to flooding the lining with shallow water; this would also have the advantage of identifying any leaks before the canal is filled.

Meanwhile, work continues on the offside wall between the bridge and old farm crossing after resolving the issue of the disused badger sett on this section. The licence to do this was obtained in the nick of time on 30th November, otherwise we would have been held up until next July. Thanks are due to Keith Higby of the Herts & Middlesex Badger Group for his help in obtaining the licence.

Ken Graves arranged a further supply of hedging plants and

these were planted in December to complete the towpath hedge. Enough were also available to plant the bank on the western side of the bridge. Very smart it all looks too!

Future Working Parties are:

Saturday 1st February
Sunday 2nd February

Thursday 13th February

Friday 21st February
Saturday 22nd February

Thursday 27th February
Friday 28th February
Saturday 1st March
Sunday 2nd March

Saturday 15th March
Sunday 16th March

Saturday 5th April
Sunday 6th April

All are at Little Tring, except for 13th March which is strimming between Little Tring and Whitehouses and 15th & 16th March which is strimming and stumping at Drayton Beauchamp. This latter weekend is with BITM and as many Trust volunteers as possible are needed to complete this job in one go.

Please contact Roger Leishman (details inside back cover) if you are interested in joining the working parties.

CLUB 100 DRAW

The Autumn draw took place at the A.G.M., and the winners were:

First Prize Mr P Bowers
£111.60

Second Prize Mrs E J Smith
£46.50

Third Prize Mr C M Jenkins
£18.60

To obtain a number in the Club, please contact Barry Martin (details inside back cover).

REMEMBER THAT THIS IS AN EXCELLENT WAY FOR YOU TO SUPPORT FURTHER RESTORATION OF THE ARM. AND STAND THE CHANCE TO WIN A FAIR CASH PRIZE.

TRUST MEMBERSHIP

As at November, we had 549 members (356 memberships) as follows:

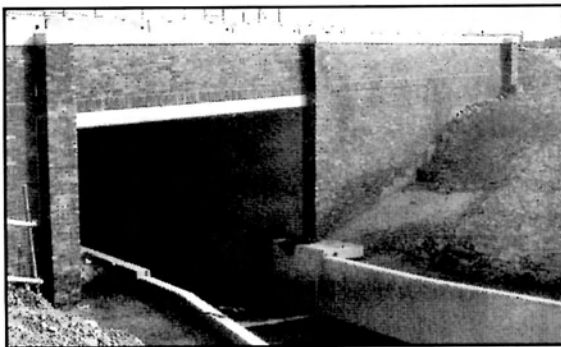
146	single
187	family(multiple)
14	corporate
9	honorary & special

ASTON CLINTON BY-PASS NEWS

Construction of the new section of canal continues, and is now sufficiently advanced for a picture of the final appearance to be imagined. The bridge carrying the new road over the diverted canal is complete, except for the brick facing on the northern side (see photograph of southern portal).

The water flow from Wendover is diverted from the sump into the stream until the diversion and British Waterways works at Drayton Beauchamp are complete. The Wendover water will then flow via the new length of canal to a new sump into the pipeline beyond Drayton Bridge.

In November the contractors commenced lining a trial section of the new channel at the southern end of the diversion, complete with soft coir roll edging at water level. Due to the very wet weather, the main lining operation has been postponed to when ground conditions are dryer.



The new A41 road bridge (southern portal) at Drayton Beauchamp, showing the brick facing, the only such adornment on any of the by-pass structures. The concrete lined channel of the new canal is clearly visible; other than this section under the bridge the new length of canal will have soft edges.

[Photograph courtesy of Balfour Beatty Construction]

Aston Clinton By-pass Canal Diversion



Looking west towards the new road bridge, as yet without brick facing. The depth of the new canal cutting can be appreciated from the ground level, which is at the fence on the left and trees on the right. The original canal is beyond the trees. This section will be lined by Balfour Beatty in the Spring, when ground conditions improve.



This is the trial section of lining, near where the new canal diversion meets the original line west of the by-pass (very weedy bit of original canal just discernable in the foreground). Note the coir roll at water level. The Bentomat has been covered with spoil.

FUNDRAISING and FUNRAISING

Introduction.

With the anticipated completion of the first phase of the restoration by 2004 now fully funded, the question arises – what next?

By 2004 the Trust's existing, pledged and anticipated funds will have been mostly exhausted - we will have reached a watershed! Pardon the pun.

With only two years in hand to solve this conundrum your Council is embarking on a review of the Restoration Strategy along with development of a parallel Fundraising Strategy. An outline Fundraising document has been prepared and this will be developed over the coming months as the future Restoration Strategy is confirmed.

I volunteered to lead the fundraising aspects (for up to three years) out of great respect for the devotion and commitment of the volunteer restoration team. It is reasonable that those who started the restoration have a realistic chance of seeing the navigation completed all the way to Wendover within their lifetimes! Those of our Members (many of whom are retired) who spend much of their spare time working in the extremes of our climate in the unglamorous muddy surroundings deserve the fullest support of the rest of the membership in one way or another.

Where we are now

The Trust has been in existence for fourteen years and actively carrying out restoration for five years. We are committed to restoring the Arm to full navigable order, promoting its amenity, tourist, recreational and water related activities and educating the public in its history, use and wildlife. With the completion of Phase 1, together with recent publicity initiatives, we will have substantial achievements to provide the foundations for a fundraising campaign to ensure completion sooner, rather than later.

With the benefit of the experience on Phase 1, together with a better understanding of the remaining challenges, the Trust's Restoration Director, Roger Leishman believes that the remaining restoration task may be simpler and thus less costly than originally anticipated. With a mix of contracted-in and volunteer effort it would be possible to achieve an earlier completion date – notwithstanding the major challenges of reconstructing a further two bridges. Of course contracted-in effort costs serious money. The Trust's current fundraising effort is centred on the highly successful annual Festival – but this alone will not sustain a faster restoration rate.

Faster restoration requires faster fundraising. Experience of other restorations together with the current national drive to improve our waterways leads the Council to believe that funds are available to those that seek them in the correct manner.

It is a central tenet of successful fundraising that the public interest in its widest sense is fully taken into account. The Trust must continue to address the amenity, heritage, recreational and tourism opportunities that the restoration offers. This means funds and effort must be scheduled to advance the Trust's achievements in these areas just as energetically as with restoration of the navigation itself.

An example of this is Shelley Savage's research that led to the publishing last year of her book "Water from Wendover" (in itself an excellent publicity initiative for the Trust). She discovered that the hitherto unknown but vital Water Gauge at the head of the Arm in Wendover is a national asset. The associated water flow records go back over two hundred years. In these days of global warming they provide a particularly valuable history for the researchers of the water flow from the Chilterns.

What has this to do with fundraising? Shelley's find enables the Trust to develop initiatives in the area of education, benefiting local schools and visitors. It also opens doors to national and local bodies who may have looked at the Arm as a dormant waterway with no potential rather than as a piece of national heritage with future potential.

Serious fundraising requires that the Trust demonstrate that it is fulfilling the wider public interest and has the support of all interested bodies including conservation societies, local government, neighbours and special interest groups. Our planning will search out and help develop more such initiatives, where possible in conjunction with partners. We need to actively promote the Trust's achievements and planned benefits. Benefits will include the key results of the restoration e.g. navigation, support from partners, e.g. local authorities, access and education policies and demonstrable social inclusion. This necessitates a clear vision of what the finished restoration will have to offer and how any fears or concerns are going to be satisfied.

Contributors, whoever they be, want to know what they are contributing to and when they can see or enjoy the finished result. A professional standard of marketing to potential contributors is required, matching the professionalism of our dedicated restoration team. An example of what can be achieved was demonstrated by the Council's successful application to the Inland Waterways Association for the award of the Tim Wilkinson Bequest to enable completion of Phase 1.

Conclusion

We need a Fundraising Strategy for:

- Members: for long term planning and to justify our activities, as the overall restoration will depend on its success. To understand the processes, the timescales and how they can be involved
- Fundraisers: to motivate, measure success, identify future activity and prioritise
- Funders: to see what we are doing and why and when completion is intended

Completion of the restoration is an exciting prospect that will bring untold benefits and opportunities not only to the Wendover Arm's neighbourhood but also to visitors from afar. I have endeavoured to give you a flavour of the fundraising challenge that we wish to undertake. It will be evident that any one person cannot carry it out; it needs enthusiastic support and involvement from the membership.

Our membership has been static (and thus ageing!) for some years and a prerequisite to future success is a membership drive to bolster our skills, knowledge and indirectly, our financial resources. We welcome (and have) Members world-wide. Please help to increase our membership in the communities near the Arm, including Tring, Drayton Beauchamp, Aston Clinton, Halton and Wendover – we particularly need local input and contributions of effort in many fields. The Trust has a need for those with experience of research, conservation, heritage projects, wildlife, education, marketing, hospitality, lobbying, and fund raising to name just a few. There is something for everybody – and if it isn't fun and sociable it isn't worth doing – as we are all volunteers!

Please also consider giving some of your time, experience or skills to the new fund raising initiative. You don't have to be living in Buckinghamshire or Hertfordshire and nothing is too small to be considered; please fill in and return the questionnaire even if you can't help at the present time. We need your views. In addition you are most welcome to contact Ray Orth, myself or any other Council member by telephone or e-mail (or by letter using the addresses under the Council listing).

David Andrew
01494 488857
fundraising@greathampden.net

Ray Orth,
01494 786868
rayorth@lowndes2k.fsnet.co.uk

STOP PRESS STOP PRESS STOP PRESS

NEW PRESIDENT FOR TRUST

We have just heard that Dave Fletcher, the outgoing British Waterways Chief Executive, has accepted the position of President of our Trust. With his wealth of experience and proven ability in getting things done (even the 'impossible' !) it is good news indeed for the Wendover Arm. Dave lives locally and knows the Arm well. Welcome, Dave, we look forward to your help and support.

NATIONAL WATERWAYS FESTIVAL 2003

Please find enclosed a form seeking volunteers to help. This is an important fund raising exercise for the Trust, and keeps us in the national spotlight. If you can spare any time to help, please return the form to Ray Orth - thank you.

Restoration Progress



The view from Little Tring Bridge in January 2003, showing the almost completed walls between the bridge and lock. The curve of the wall into the bridge hole is clearly visible in the left foreground. This section is ready to have the temporary roadway excavated prior to laying Bentomat lining. Some of the excavated material will be used to backfill the towpath side wall (on the left). (For further details please see the 'Restoration News' article).

WATER FROM WENDOVER

Sales of our booklet, 'Water from Wendover', continue to be encouraging with almost £2400 in receipts to date. Copies remain available from Beryl Martin (address inside back cover) at £4.95 each (+55p P & P) or from local bookshops in Wendover, Tring, Aylesbury, Berkhamsted, Princes Risborough, Dunstable and Chesham. They are also on sale at the Tring and Wendover Information Offices, and from British Waterways Marsworth Office.

The booklet is an ideal way to publicise our canal and to make its charms known to a wider audience; please do all you can to encourage further sales.

1790 PLAN OF THE ARM

We have made arrangements to obtain copies of the splendid 1790 Plan of the Wendover Arm, and orders may now be placed.

The original Plan, on vellum, is in the Waterways Trust Archive. It has been digitally photographed, in colour. The Waterways Trust has kindly agreed to supply us with prints at cost, i.e. waiving their usual profit margin; for this we are most grateful.

The Plan shows the Arm as originally intended - i.e. as a non-navigable feeder with the route substantially different in two locations (Halton and New Mill) from the navigable canal actually built. Parish boundaries and adjacent fields (with names) are shown. The Plan, as well as being a wonderful historic record, makes an attractive picture to frame for hanging on a wall.

Copies are available:

Full (actual) size 30" x 40" @ £95 per copy

Medium size 16" x 20" @ £30 per copy

Small size 10" x 12" @ £15 per copy

To order your copy, please send a cheque for the required amount (payable to Wendover Arm Trust), with your name and address, to John Savage, 16 Lakeside, TRING, Hertfordshire, HP23 5HN

STUART ANTHILL



We are sorry to have to report the death of Stuart Anthill, a long term waterway enthusiast who had been actively involved in the IWA Hertfordshire Branch, latterly as Treasurer and Co-chairman.

Stuart's enthusiasm started after a family narrow boat holiday in 1977 on the Stratford and Worcester and Birmingham canals. He gave hundreds of hours of his time and energy to the waterways cause and believed passionately in the preservation of Britain's waterways heritage, particularly the restoration of old canals.

It is fitting, therefore, that his widow Margaret asked for donations in memory of Stuart to go to the Wendover Arm Trust to further the restoration of our delightful waterway for the future benefit of those who appreciate boating, walking, angling and bird watching.

To date we have received almost £700 in donations, a magnificent response for which we are most grateful. We hope that the restoration thus funded will be an appropriate and lasting memorial to Stuart.

BRITISH WATERWAY'S WORKS AT DRAYTON BEAUCHAMP

Construction work is underway to build a 120 yard length of lined channel, extending the diverted section being built by Balfour Beatty to a new sump on the Little Tring side of Drayton Bridge.

British Waterways has secured funding (£299,000) for this job as essential maintenance to deal with the additional water from the new road run-off. The reconstructed section will replace that length of the 1911 underground pipeline.

The original intention was to add the job onto Balfour Beatty's contract, but they proved too expensive so British Waterways have let the contract to Edmund Nuttall Ltd., who are experienced in waterway construction.

The job involves replacing the underground pipeline with a channel lined with Bentofix, a geotextile using Bentonite. The bridge hole, however, is being constructed entirely in concrete.

The original brick wharf, on the Little Tring side of the bridge, has been exposed; although it will not be restored for mooring it will be retained as an interesting heritage feature. Some repairs to the original brickwork are necessary, although it is well preserved having been largely buried since falling into disuse.

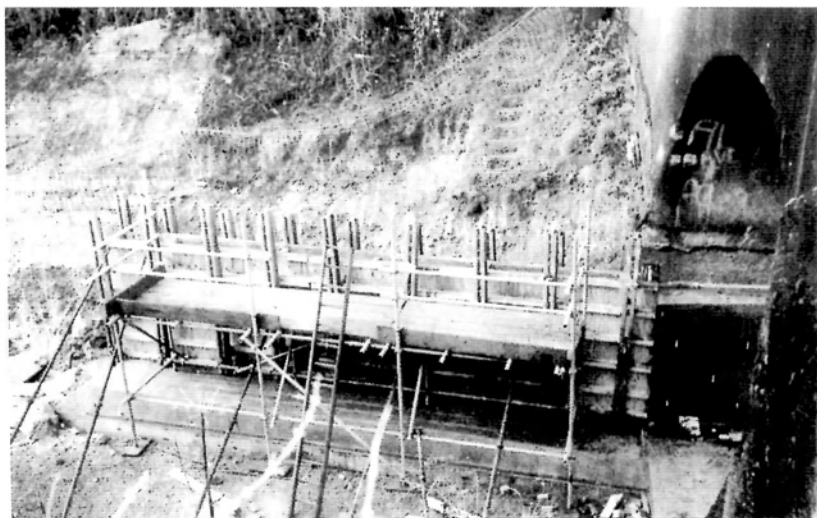
Although the job has been funded as maintenance, in recognition of the future full restoration of the Arm this new length of channel is being built to full navigational standard.

A waterproof bund will be built to retain the water in the relined section. A new inlet chamber will be constructed within the bund and the existing pipeline broken into at the north eastern extremity of the relining works. It is planned that this temporary sump will be progressively moved towards Little Tring when the Trust's Phase II restoration commences.

The work in progress can be viewed from Drayton Bridge, and completion of the contract is due in late February.



The view looking west from Drayton Bridge showing the excavated channel prior to lining. The pipeline ran to the left of the channel and the exposed pipe can just be seen towards the top left of the picture.



Shuttering on the eastern side of Drayton Bridge for the construction of the concrete lined section through the bridge hole. The completed concrete channel may just be seen under the bridge arch.

HISTORICAL PERSPECTIVE



This view shows the original bridge at Halton Village in about 1900, just about the time this section of canal closed to navigation. The photographer is standing by the gate to the church, which is to the right, looking towards Weston Turville.

The area to the left, behind the wooden fence, is now occupied by modern houses and bungalows but the cottages in the view are the same today. Several of the cottages in the village bear decorative plaster plaques portraying rural activities as well as Rothschild family arms.

The brick arch canal bridge, despite surviving for over sixty further years, succumbed to functional modernity at a time when heritage seemed to count for very little. Had it survived a little longer it would no doubt have been listed and protected!

Wendover Arm Trust

Registered Office: 129 High Street, Berkhamsted, Herts HP4 2DJ
A non-profit making company limited by guarantee. Registered in England No. 2353392
Incorporated 1989. Registered Charity No. 801190

President: Dr. David Fletcher, CBE

Vice President: Mr. Roger Lewis

The Council

Chairman

Bob Wheal
467 Bideford Green
LEIGHTON BUZZARD, Beds
LU7 2TZ
Tel: 01525 381614
07860 286155

Restoration Director & Vice Chairman

Roger Leishman
7 Hall Park
BERKHAMSTED, Herts
HP4 2NU
Tel: 01442 874536

Secretary

John Hopkins
80 Ashfield
Stantonbury
MILTON KEYNES
MK14 6AT
Tel: 01908 311521

Treasurer

John Brooman
66 Bryants Acre
Wendover
AYLESBURY, Bucks
HP22 6LA
Tel: 01296 623542

Publicity Officer & Newsletter Editor

John Savage
16 Lakeside
TRING, Herts
HP23 5HN
Tel: 01442 827702

Membership Secretary

Barry Martin
69 Wenwell Close
Aston Clinton
AYLESBURY, Bucks
HP22 5LG
Tel: 01296 630599

Trust Sales

Beryl Martin
69 Wenwell Close
Aston Clinton
AYLESBURY, Bucks
HP22 5LG
Tel: 01296 630599

Fundraising Director

David Andrew
29 Great Hampden
GREAT MISSENDEN, Bucks
HP16 9RF
Tel: 01494 488857

Minutes Secretary

Shelley Savage
16 Lakeside
TRING, Herts
HP23 5HN
Tel: 01442 827702

Council Member

Ray Orth
42 Lowndes Avenue
CHESHAM, Bucks
HP5 2HN
Tel: 01494 786868

Council Member

Ron Pittaway
65 Wenwell Close
Aston Clinton
AYLESBURY, Bucks
HP22 5LG
Tel: 01296 630968

BW Nominee

Matthew Routledge
BW Grand Union South
Watery Lane
Marsworth
TRING, Herts
HP23 4LZ
Tel: 01442 825938

IWA Nominee

Elizabeth Payne
33 Priors Walk
St John's Priory
LECHLADE, Glos
GL7 3HR
Tel: 01367 253121

Chiltern Society Nominee

John Rowe
Fox Meadow
Water End Lane
Potten End
BERKHAMSTED, Herts
HP4 2SH
Tel: 01442 862619

Tring/Wendover Canal Festival

This year's Festival will be held on Sunday 25th and Monday 26th May 2003 - make a date in your diary now.

All the usual attractions will be there - let's have a bumper event ! Remember that all proceeds go toward funding the remaining dry section between Drayton Beauchamp and Little Tring.

★★★★★★★★★★★★★★★★★★★★★★★★★★★★★★★★★★★★

Please start your support now by buying or selling the enclosed Grand Draw tickets.

Counterfoils and cheques should be sent to:

Jo Leeson
120 Bedford Road
Cranfield
BEDFORD
MK43 0HA

Tel: 01234 750898

from whom additional tickets may also be obtained.

WENDOVER ARM RESTORATION - FUNDRAISING

"Many hands make light work!"

I can help in the following areas:

please tick as many as appropriate

- ☐ Education: schools, the public and local organisations
- ☐ Networking & contacts: commerce, public bodies, local organisations, celebrities, individuals
- ☐ Publicity, promotion, sales and marketing
- ☐ Ecology, wildlife and the environment
- ☐ Planning - financial and business
- ☐ Research - history and heritage
- ☐ Fundraising events and campaigns - large and small
- ☐ Administration - list management, minutes, mailshots, telephoning
- ☐ Internet – e-marketing and web authoring
- ☐ Report and bid writing, submissions and presentations
- ☐ Public relations and lobbying
- ☐ Other (please specify)
- ☐ Not now - but maybe later

How may we contact you to follow this up?

When would you prefer this?

When would you be able to help? ☐ daytime ☐ evenings ☐ weekends

What led you to support the Trust? (so that we can learn how to recruit more members)

What else you would like to tell us now? (continue overleaf)

Name:

Address:

Telephone:

E-mail address:

We will not pass your e-mail address on without your permission – it is however very helpful to us to have your e-mail address to keep you informed of progress, events and maybe activities where you may wish and be able to help in the future

Thank you for helping us make this first step to raise our funding activity.

Send to David Andrew, Fundraising Director, Wendover Arm Trust,
29 Great Hampden, Great Missenden, HP16 9RF Tel: 01494 488857

Jan2003