



WENDOVER ARM NEWS

Newsletter of the Wendover Arm Trust



*Issue 2015/1
Spring 2015*

*Price £1 where sold
Free to members*



WENDOVER ARM TRUST

President
Vice President
Patron

Dr David Fletcher CBE
Barry Martin
David Suchet CBE

Wendover Arm Trust, A Company Limited by Guarantee. Registered Charity No.801190. Its **AIMS** are:

To promote the restoration and maintenance of the Wendover Arm of the Grand Union Canal, (including all waterways, buildings, and related structures), to good and navigable order and to promote the fullest use of the waterway by water-borne traffic (subject to the regulations of The Canal and River Trust) and for local amenity, recreational and water related activities for the benefit of the public.

To restore, preserve, maintain and to educate the public in the history, use and associated wildlife, of canals and inland waterways generally and the Wendover Arm in particular.

General telephone number: 07547 181857 **Website:** www.wendoverarmtrust.co.uk

Registered Office: Fox Meadow, Water End Road, Potten End, Berkhamsted, Herts HP4 2SH

Advertising Enquiries:

Contact either the Publications Director or the Publicity Director, (Email addresses on p3)
or speak to the Newsletter Editor on 01494 863176

The views expressed in this journal are those of the contributors and cannot be taken as those of the Council of the Wendover Arm Trust. Whilst all reasonably practicable steps are taken to confirm the accuracy of any statements herein, no liability can attach to the Editor, or the Council of the Wendover Arm Trust, or any contributors for any errors and neither the Editor nor the Council of the Wendover Arm Trust accept any responsibility for any consequences however caused.

BARTON

PETROLEUM

www.bartonpetroleum.co.uk

For all commercial and residential fuels

01923 233171

Your contacts on the Trust

Chairman	Chris Sargeant chairman@wendoverarmtrust.co.uk
Vice-Chairman	vacant
Hon. Secretary	John Rowe johnm.rowe@talktalk.net
Treasurer	Clive Wilson treasurer@wendoverarmtrust.co.uk
Restoration Director	Roger Leishman restoration@wendoverarmtrust.co.uk
Assistant Restoration Director	Ray Orth restoration2@wendoverarmtrust.co.uk
Events Director	Martin Bird events@wendoverarmtrust.co.uk
Funding Director	vacant funding@wendoverarmtrust.co.uk
Membership Secretary	Katherine Deaney membership@wendoverarmtrust.co.uk
Publications Director	David Page newsletter@wendoverarmtrust.co.uk
Publicity Director	Nigel Williams publicity@wendoverarmtrust.co.uk
Sales Director	Bob Wheal sales@wendoverarmtrust.co.uk
Webmaster	Chris Sargeant webmaster@wendoverarmtrust.co.uk
General Member (with responsibility for Health & Safety)	Charlie Carrington charlie_carrington@hotmail.com
Minutes Secretary and IWA Nominee	Jenny Brice jenny@johnbrice.co.uk
CRT Representative	Neil Owen neil.owen@canalrivertrust.org.uk

In this issue

	page
Editorial	4
Chiltern IWA and our new trailer	4
Chairman's Column	5
Membership Update	6
Club 100	7
Publicity and fund-raising	8
Restoration Update	10
A Panorama of the Arm	12-13
WAT Shopfront	14
Towpath Upgrade	18
Grand Draw 2015	19
This is Geri. . .	20
Flora and Fauna of the Cut	20
Canal and River Trust News	20
From the Archives	21
Tring News	21
Events Update	22
New Council Members' profiles	23
Additions to our literature	24

ADVERTISERS

Barton Petroleum	2
Wyvern Shipping	24

Cover picture:

A view of bridge 4a and the unrestored cut back towards Little Tring.
Taken from a drone
With thanks to Anthony McGill© for permission to reproduce his picture

Copy deadline for the Summer 2015 issue 20 May 2015

FROM THE EDITOR

As you will note in this issue, we have a new Chairman and a Treasurer. We have someone, not on Council, who is advising us about investments. We have completed the restoration up to bridge 4a and this now awaits water when there is some available – would you believe there is little coming from Wendover! We are getting the nod that it's worthwhile proceeding with a full HLF grant application which means a lot of work and ideally requires us to find a Funding Director – any offers? We are getting a new Events Trailer and we've got some lovely aerial pictures of the cut thanks to Anthony McGill and his drone. All go! and no space for my cookery column – shame

IWA CHILTERN BRANCH TO FUND OUR NEW EVENTS TRAILER

Anyone who has helped to put up our events stand knows what a hassle it is: go to the garage, sort out the sales stock, load it and the frames, display boards, gazebo, tables, literature, games etc. into our little trailer and into your own vehicle (with the concomitant risk of damaging it), go

to the event get it all out, put up the giant Meccano set, hope you can take a breather during the event and then do the whole thing in reverse. Little wonder that it's difficult to get volunteers!

Martin Bird, our Events Director undertook to find something to improve the situation. Ideally we would have liked a small showman's trailer – hitch it up, drive to the event, open the doors and, hey presto, there it is ready for the visitors. Wonderful, except for three slight snags,

(1) nowhere to store it, (2) nothing with which to tow it and (3) a cost of around £10,000.

Enter our fairy godmother in the shape of Chiltern Branch IWA who were prepared to donate up to £2000 for a trailer. So,

back to the drawing board, cut our cloth accordingly and Martin has now come up with a proposal to buy a Lynton Loadtrekker. This will take the new stands and display boards he is having made plus the gazebo and all the other accoutrements, it will go into the garage the Trust

rents, is towable by a family car and, it comes within budget. We have now agreed this with Chiltern IWA and it is being purchased. It should have its first outing to an event at the Rickmansworth Festival in mid-May.



CHAIRMAN'S COLUMN

It is an honour to have been elected Chairman. I believe we now have a strong team on Council and that together we can further the aims of the trust to restore the Wendover Arm.

At the outset I would like us all to recognise the huge amount of work which Roger Leishman has put in over the past year as both acting Chairman and acting Treasurer as well as his primary responsibilities as Restoration Director – this has been a tremendous task carried through with customary thoroughness and dedication. Thanks are also due to his wife Margaret who assisted Roger for many unseen hours and who was our minutes secretary until after the AGM and to Council members for their help during this challenging period.

We now welcome Clive Wilson and Charlie Carrington to Council – Clive will become treasurer in his own right from April and Charlie will bring his experience in Health and Safety in particular to the trust.

Thanks also to Jenny Brice and John Reynolds who have joined Martin Bird on the events committee.

Nigel Williams has been doing a magnificent job in publicity but also covering the first stages of our Lottery Fund application so, to complete our team we now need a Fund Raising Director to help raise the money that we will need to complete stage 2 and enable navigation to the new A41 – to say nothing of stage 3. Please bring forward



any suggestions or contacts whom we might approach for this vital role.

Our priority is to expedite the restoration project and we will be looking at possible alternative ways of working and the use of outside help which may be available.

To support our restoration teams we will appreciate help from members in running our events and in fund raising for materials and plant hire. A list of our events is in this newsletter and on our website – please do contact our events team with offers of help and suggestions for future occasions. Just a few hours by a number of people will make a big difference – as ever, ‘many hands make light work.’

Thank you all – please do get in touch with any suggestions or offers of help

Chris Sargeant, February 2015

MEMBERSHIP UPDATE

The Trust sends a warm welcome to the following new members who have joined us in the last three months:

Mr Roger Rowe

from Haddenham

Mr Chris and Mrs Liz Pallet

from Wendover

Mr Michael Dean

from High Wycombe

The winter months are traditionally a quiet time of the year in terms of membership activity. Now that spring is on the way, and as we attend events, new members will join us. The Restoration Open Days are particularly successful events for recruiting new members who are inspired having seen the actual restoration volunteers in action.

If you know of anyone who would support the Trust and the restoration, please ask them to join us, the more the merrier! Full details can be found at www.wendoverarmtrust.co.uk/membership

Alternative memberships available

In addition to annual membership renewals, we now offer life and block memberships. These memberships make it easy to continue supporting the Trust without having to make a payment every year. It also makes life a little easier for Katherine our dedicated membership secretary. Gift aid can be claimed on all memberships (assuming you are eligible). If you normally pay by annual standing order, be sure to cancel this instruction, to avoid paying twice!

Life Membership

The Trust now offers life membership for a one off payment of £250 for joint members and £150 for single members. Existing members can upgrade to life membership at any time, simply contact Katherine and arrange payment and she'll do the rest. Life members are sent a commemorative certificate as a small token gesture for their commitment to the Trust and will receive the newsletter four times a year. Some life members chose to take part in Club 100, the Trust's very own exclusive cash prize lottery scheme.

Life membership runs for life, or as long as you wish to support the Trust, it is non-transferable.

Block Membership

Buy a 5 year block membership and save 20% on the annual renewal price. Block membership is £60 for joint and £40 single. You are welcome to upgrade to block membership at renewal time, simply pay the correct fees and Katherine will take care of the rest.

AGM

You might think it a bit early to start talking about this year's AGM, hardly seems five minutes since the last years. However, so that you can make a date in your calendar we have fixed it at

WEDNESDAY 21 OCTOBER

The venue once again will be at Green Park, Aston Clinton and following the success of the format in 2014 it will include a sit-down meal. Our hope is that Richard Parry, CRT's chief will be

available to come to speak to us, more in the summer Newsletter

E-raffle

The Trust's thanks to all those who took part in our 'experimental' E-raffle over the Christmas period. 439 'tickets' were bought and it was drawn on 16 January. The winners were:

- 1st** David Hughes £100
- 2nd** Barry Martin £50
- 3rd** David Hughes £25

Not surprising that David was successful as he bought 50 out of the 439 'tickets! David tells us,

*'This is only the second time in my 66 years on this planet that I have won anything – let's hope it's an omen for this coming year.
Please do not send me a cheque. The money was donated by someone who wanted to help the Trust so in the same spirit please add it to Trust funds.
Personal circumstances have prevented me from assisting in a physical, practical way so I am happy to support the work in this way. Perhaps this year will see me turning up with a spade and pick!'*

With gift aid, and the only expenses being bank processing fees (all the prizes were donated) and David donating his winnings back to the Trust we will net £500. Not bad for a bit of computer time!

Donations

We have received a very generous donation of £2000 from Michael Dean of High Wycombe and the Trust's grateful thanks go to him. Michael has accepted our offer of a five-year membership.

Club 100

Exclusive members-only fund-raising lottery

Record number of lucky numbers in the Winter Draw

There were 188 lucky numbers in the draw made at January's council meeting.

The prize winners were:

- 1st** Mrs Elsie Adams £225.60
- 2nd** Mr John Henderson £94.00
- 3rd** Mr David Page £37.60

who remarked, 'I bought another couple of numbers by mistake – glad I did!'

Congratulations to our winners and thank you to all members who take part in the Club 100 lottery. The scheme has raised over £20,000 for restoration funds since it began in 1997.

If you would like to be in with a chance of winning a juicy cheque to help pay those bills, joining **Club 100** couldn't be easier. Simply complete an application form (contact Katherine Tel: 07547 181857 for one) and arrange payment by cheque, BACS transfer or standing order.

Each lucky number costs £15 per year and enters the number into the four quarterly draws. The jackpot is directly proportionate to the number of subscribers.

TWELVE MORE SUBSCRIBERS AND WE'VE GOT A CLUB 200

Will you help us get there?

PUBLICITY AND FUND-RAISING

from Publicity Director Nigel Williams

TCCC supports WAT!

Each year the Thrupp Canal Cruising Club, based on the South Oxford canal near Kidlington, chooses a



Charity of the Year at its Annual General Meeting. Nigel Williams, our Publicity Director, suggested WAT and attended the meeting having been invited to pitch for our restoration effort. At least two WAT members are also members of TCCC.

When the votes were counted we came second! However, it subsequently transpired that the chosen charity was not quite what it purported to be and in fact subsequently folded. We were therefore informed that the Committee had decided to support us and it is hoped that this will be worth in excess of £3000 by the time 'our year' closes.

It's worthy of note that last year's

TCCC *Charity of the Year* – Respite Nursing for Oxfordshire's Sick Youngsters raised £5138. Perhaps WAT may not generate the same tug on the heart-strings amongst TCCC's members as a health charity but TCCC is hopeful and so far £120 has been raised for our cause.

Heritage Lottery Fund

Our initial Project Enquiry submission to HLF has been acknowledged and I have been in Email and telephone contact with two of the Development Officers. Since the canal restoration crosses two county boundaries it transpires that different teams deal with Hertfordshire and Buckinghamshire. Whilst the remaining section of Phase 2 is entirely within Hertfordshire, HLF needs to know in which region the majority of the project costs relate to and this is where difficulty arises. We are applying for £1.55 million but only about £400k is needed for Phase 2 (assuming all volunteer work) but approaching £1

Easyfundraising

We have reached just over £263 with 33 supporters.

The picture on the right tells you how to do it. It's easy-peasy and there are oodles of suppliers who will make modest donations to charitable causes.

We need to increase our supporter base, why not do your purchasing through Easyfundraising and painlessly add to WAT's coffers?

Psst...!
Raise **free** donations when you shop online!

- 1 Visit: www.easyfundraising.org.uk
- 2 Support: Wendover Arm Trust
- 3 Shop & raise with over 2,700 retailers including:

amazon Argos Expedia John Lewis

easyfundraising
.org.uk

million if contractors are involved. Phase 3 will require more than the total figure for full **navigation** but this is so far in the future that only full navigable **depth** may have to be accepted in the interim. On 16 January with help from Roger Leishman, Ray Orth and Victoria Ireland I submitted our response to the various questions raised by HLF. A decision is awaited as to which office will possibly deal with the whole application and then we can prepare a Stage 1 application.

Roger, Ray and Chris Sargeant had a meeting with CRT's Simon Salem in March and the outcome was that the application will be a joint one between WAT and CRT for a project not exceeding five-years duration to complete phase 2. Simon said that his lead-person will be James Clifton and that he would provide a copy of the Grantham Canal's bid as a template.

The aim is to have the application submitted within three months so that, if successful, the funds would become available in 2017. Make no mistake this is going to require a massive amount of work from WAT and Victoria Ireland; HLF applications aren't just a 'please give us some money' statement written on an A4 sheet but have to be a studiously crafted argument about the heritage, social, environmental and employment benefits that will flow from the grant. But, if we succeed we know then that we can get Stage 2 and 3¼ miles of cruiseway completed by around 2020.

Tell the World!

As part of our efforts to enhance our profile locally the following magazines

have published or will publish articles about WAT and the restoration following submission of my copy and Chris Sargeant's photos.

Village Life.

Aston Clinton, Buckland, Drayton
Beauchamp edition.
Published Oct/Nov 2014.

Village Life.

Wilstone, Puttenham, Long Marston
edition.
Published Dec 2014.

Marsworth News

To be published February 2015.

Wendover News

has published latest Restoration Report.

Restoration Open Day – June 7

I have sent notifications to the following publications about our first Restoration Day of 2015:

Waterways World
Tillergraph
Towpath Talk
IWA Online Calendar
Marsworth News
Thrupp Canal Cruising Club
Wendover News
Beacon Magazine
Vale Life
Tring Together

If you know of local publications that would be prepared to receive one-off or regular articles or press releases about the Wendover Arm then just let me know, my Email address is on p3. The more that we can spread the word about the Arm and the Trust the more is the local interest and support for our cause we can generate.

RESTORATION NEWS

Adapted from Roger Leishman's restoration group's newsletters

December 2014

Although the weather was not perfect good progress was made. We continued the lining through the narrows of Bridge 4a and lined the towpath bank for 20 metres to match the offside that had been done in the November working party – see pictures opposite

All that remains now is to line the east throat of the bridge narrows and construct a bund just east of the bridge span and then the next re-watering can be contemplated.

In case of flooding a mini-bund has been built just where the photographers shadow is in the foreground to prevent water coming from the (now) waterproof 437 metres of new lining. In addition the area beyond the bridge has been levelled off so that any water can drain into an existing manhole on the pipeline about 40 metres past the bridge.

January 2015

The forecasts of appalling weather in January did not come to pass and we continued with the lining through Bridge 4A. We were also able to continue with excavation for continuing the pipe capping in Stage 3 and clear an area for tipping the spoil in Stage 4 between Whitehouses and Bridge 4. The annual trimming of the towpath hedge on the towpath side at Little Tring was also completed.

February 2015

Relining to Bridge 4A was completed at

the February working party despite the setback of having a dumper break down after having unloaded 2m³ of concrete and about to return for the second load from the Ready-mix lorry. This breakdown on Wednesday morning also trapped an excavator so things came to a complete halt. Fortunately Hardings, our Ready-mix supplier, was able to deliver the second 2m³ to another customer but it took from mid-day on Wednesday until Friday morning to get the dumper working again although then the engine could not be turned off from 7am until it was loaded onto the lorry later in the day for return to the plant supplier! Our thanks to those who extended their working week to the Friday to enable the concreting to be completed; also to Hardings and Morgans for pulling out all the stops to enable this to happen.

Excavation of the bed ready for pipe capping continued with the spoil being tipped in Stage 4.

Project Hereward

On 7 February we had a visit from five members of the Project Hereward group, intent on restoring the Horseways Channel in the fens. This channel links the 40ft and 16ft drains with the Old Bedford River with a lock at each end. (If you are a member of IWA there is a letter 'More on Welches Dam Lock' on page 45 of the spring 2015 issue of Waterways that outlines the problem in more detail.) It seems that the Environment Agency, which is

(Continued on page 16)



Nearly there

Roger Leishman



Mission accomplished

Roger Leishman



Hip, hip, hip hooray! Now we can start to fill the section with water

Chris Sargeant



Mini-bund

Roger Leishman



Full bund built, removing the mini-bund

Chris Sargeant



An aerial view of the Arm from Whitehouses eastwards towards Bulbourne. With kind thanks to Anthony McGill© for permission to reproduce his photograph

The Wendover Arm leaves the main line of the Grand Union about in the top centre of the picture where you can see the black hedge line that goes to point ①.

① Heygates Mill at New Mill. ② The 'Festival Field' (even the locals call it this!). ③ Tringford Pumping Station. ④ Little Tring Bridge. ⑤ Current end of navigation. ⑥ Restoration work camp.

⑦ The three Marsworth reservoirs (Marsworth, Startops End and Tringford.) ⑧ Bridge 4. ⑨ Whitehouses.

Distance from ⑤ to ⑨ is 900 yards. Distance from ⑨ to Bridge 4a, off the bottom of the picture and the terminus of the currently restored section, is 500 yards.

WAT Shop is now open!

Since volunteering (?) to look after sales for the Trust, I have been looking at ways to build up on-line sales *via* our website. Of course, we will continue to appear at many local events through the year with a range of sales items, both familiar and new. However, not everyone can make it to the various events and fairs we have a stand at, and buying via our on-line shop is a convenient way to still support the Trust.

So what is on offer?

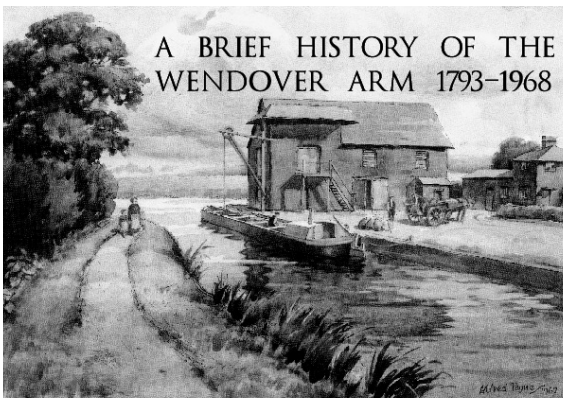
Firstly, if you completed the questionnaire about what items we should stock, thanks! We are currently researching and sourcing new items based on your suggestions, and an updated stock list will be out in due course.

The new product I want to tell you about is the new WAT **Lapel Badge**. Not everyone is able to wear a Sweat/Polo/T Shirt, and it is only with these that the Trust Logo is visible and displayed. On the other hand, a smart, stylish yet discreet badge is easy for anyone to wear, whatever the clothing. Our badge is a quality product with a zinc finish, showing the Trust logo in blue and white enamel. It is both attractive and affordable at £5.25 (that includes postage, too). As an introduction, we are offering two badges for £10, postage paid.

By wearing your badge you are supporting the Trust, and helping to promote it at the same time. Wear your badge and note how many people ask what it represents!

We also have the newly published booklets '**A Brief History' of the Wendover Arm** (£4.95) and '**The Waterway comes to Tring**' (£11.95), both well worth reading.

A BRIEF HISTORY OF THE WENDOVER ARM 1793-1968



THE WATERWAY COMES TO TRING: 1792-2013



THE GRAND JUNCTION CANAL

Ian Petticrew and Wendy Austin

We do have some old favourites such as **Tea Towels** (£5.95), **Greeting Cards** (£9.95 for 10) and **Water from Wendover Booklet** (edition 2) (£6.50)

Find and order the Trust Badge, as well as other goods, on the Trust's website at www.wendoverarmtrust.co.uk/shop.html.

Enclosed with this newsletter is a mini-catalogue giving a 'snapshot' of some of the various items we offer, printed with a simple order form on the reverse. So now you have a choice – go online and place your order just as you would with any other online shop, or complete the order form and post it, complete with payment.

All our prices include post and packing. There is no more to pay.

p.s. Where are the T Shirts/Sweat shirts/Polo shirts? We are currently re-stocking and they will be available soon. Keep checking the website!

Bob Wheal

Photos please

As part of our range of merchandise we would like to produce a series of note-books, notelets, memo pads etc. that have front covers with pictures relevant to the Arm – its history, its restoration, flora and fauna of the cut, scenic views, places of interest etc. – done in a format that can be used as postcards.

Do you have anything that could be used? If so then send them to the Sales Director, Chairman or Newsletter Editor; they should be of a quality that any picture, or a cropped part of it is crisp and clear at postcard size (6" x 4") They can be any usual picture formats (.jpg, .psd, .tiff, .png, .gif etc.) but please ensure they are at least 300dpi (this rules out mobile phone pictures) and please, please do NOT embed them in an Email or Word document.

You don't have a scanner? Then, if you are prepared to, let us borrow the picture to scan – it will be returned to you – or send me an (unfolded) photocopy.

Sales Range

I have had some response to my call in the winter 2014 issue for suggestions as to what items we should add to our sales range but there is still ample opportunity to chip in with your six-pennyworth – and this will be an on-going request

Put on the hat of a non-member and ask yourself, 'What would attract me to buy from WAT's stand at an event?' You could even ask yourself the same question with a Member's hat on! We do need to know so that we have a clue whether an item may do rather more than sit on the shelf unsold, in posh circles it's called Market Research! Don't be afraid to send in oddball ideas. Some of the best things in life that you can buy have come from a bit of lateral thinking.

Thank you in advance – your response is much appreciated.

*Bob Wheal Sales Director c/o 467 Bideford
Green Linslade LU7 2TZ
Email:sales@wendoverarmtrust.co.uk*

Restoration update

(Continued from page 10)

presently responsible for this waterway, is not being very co-operative!

The channel is about 2½ miles long and leaks. The group had heard about our expertise in lining a leaking canal and asked to come and visit our work to learn all about what they are faced with. Despite an overcast day it was dry and we trust that we gave them all the information they require.

March 2015

We built the bund with a Bentomat core in the narrows of Bridge 4a and in the centre picture on p11 you can see the celebration of this achievement that will allow us to re-water up to bridge 4a.

Excavation for pipe-capping has started in earnest from the manhole just past bridge 4a (see the pictures on p11.) The manhole is on the towpath side but the pipeline crosses the canal and disappears for some distance well underneath the offside bank towards Whitehouses. Once pipe-capping crosses the bed to the off-side access towards Bridge 4A will be cut off.

Future work

For the next year we will be involved with major excavation works. It seems odd that the pipeline was not laid in the bed of the former canal but we suspect that the adjacent Local Authority tip on the offside spilled onto canal land and over the line of the pipe as the canal was not in water; to find the pipeline we are going to have to dig into this tip, dump the spoil between Whitehouses and Bridge 4 (you can see both marked

on the centre-spread picture), profile the bank at 45° for safety reasons, cap the pipe then replace the spoil, then leave it to settle for around eighteen months before we can begin the task of profiling and re-lining.

Should we find that we have reached Whitehouses before we can start profiling and relining then we will continue the capping towards Bridge 4.

CRT's work to complete what they have to do at Whitehouses is now scheduled for six weeks in July and August after which we can bring Kent and East Sussex Canal Restoration group's volunteers back to complete their work.

Site Accommodation

This has been a thorny question for sometime but Council has agreed that somewhere to use as a welfare cabin (site hut) and with sanitary facilities was necessary. So, a cabin has been ordered, a Portaloo has been acquired at no cost and they will be put at Whitehouses. We'll feature this in the next Newsletter (cover photo?!)

The Way Ahead with Restoration

As has been mentioned in previous Newsletters, Council is concerned at the rate of progress that our volunteers can make. Not only does Council (and, we suspect, the restoration volunteers too) want to get the job done but, in going for HLF funds there will need to be a timescale associated with any grant application (see Nigel's article on p9) and a reasonably short timescale too.

With this in mind Roger and Ray have been costing a number of options that

could speed up the rate of restoration to determine the trade-off between increased costs and reduction in the timescale that would see the completion of navigable water from Bulbourn to Saxonway Bridge on the Aston Clinton by-pass (A41).

Without prejudice to any final decision the best option at the moment seems to be a combination of volunteer labour with local contactors being brought in for the 'heavy' work. HLF is likely to look favourably on the use of local contractors as that creates employment in the area covered by a grant. We would need to get £800,000 over and above the funds we have already but the result would be joined-up water in 2021 rather than the current estimate of 2025 as a D-i-Y job.

Work Parties

The next three work parties will be:

April: 10th to 16th

May: 1st to 7th

June: 5th to 11th

The Sunday of the June work party will be in the public eye as this is the first Restoration Open Day of the year.

**New volunteers are most welcome,
contact Ray Orth:**

restoration2@wendoverarmtrust.co.uk
or phone 07547 181857

For both new and current volunteers, while we are pipe-capping we will need essentially a fixed number of people each day. So PLEASE be prepared to commit to a given day/days during each week so that we can prepare work schedules.

Volunteer labour

The table below shows the value of our volunteer labour up to the end of 2014. The total of volunteer hours has now passed 81,000

To have passed the £1m mark and more is quite a milestone in our restoration and pays tribute to the dedication of our valiant band of restoration volunteers.

We are indebted to Joyce Smith who has given us great support in compiling these records from our daily site sheets these past 19 years. Joyce also supplies CRT with details of our volunteer effort that go into their overall volunteer statistics.

YEAR	HOURS	CUMULATIVE VALUE @ 2½% p.a INFLATION
1996	1,016	8,132
1997	997	16,515
1998	2,696	62,287
1999	3,550	97,012
2000	4,240	140,129
2001	5,022	189,038
2002	5,560	245,347
2003	6,722	315,399
2004	6,648	390,742
2005	3,785	447,264
2006	4,180	503,665
2007	5,463	573,601
2008	4,342	634,657
2009	5,285	708,807
2010	5,262	766,754
2011	5,799	872,766
2012	5,694	962,213
2013	5,451	1,052,623
2014	3,596	1,123,813

TOWPATH UPGRADE ON THE WENDOVER ARM BETWEEN BUCKLAND WHARF AND DRAYTON BEAUCHAMP

The 300m length of towpath on the Wendover Arm from Buckland Wharf towards Drayton Beauchamp has become exceptionally muddy and slippery in recent years, to the point of being almost impassable in wet weather, especially as the path sloped towards the canal. It was without doubt the muddiest length

quality surface with wooden edging. The work was carried out by T. Clubb & Son who are based in Long Marston.

The towpath between Buckland Wharf and Little Tring is popular with walkers and cyclists alike due to its exceptional 180-degree views across the reservoirs towards Wingrave and Mentmore, and



of towpath on the entire Wendover Arm.

Thanks to a grant from Aylesbury Vale District Council's *New Homes Bonus Funding Scheme*, the towpath was upgraded in February to a high

this upgrade will enable year-round use of it. Thanks are due to AVDC, Buckland Parish Council, the Canal & River Trust and Clubb's for their various contributions towards this project.

Peter Elwin

Grand Draw 2015

2015's Grand Draw is now underway. Tickets are currently being printed and will be distributed in the summer Newsletter and will be available at all the events we attend. We hope that once again you'll give us the magnificent support that you have done for the past few years – now that we no longer have the ability to raise funds through the annual Canal Festival, the Draw provides the Trust with the regular source of income, along with the membership subscriptions and the Club 100, that allows the Trust keep up the work of restoring the Arm.

Prizes will include the 'usual suspects' headed by the week's canal boat hire generously donated by Wyvern Shipping and as the weeks roll by many others will be added to the 'and many other prizes' category listed on the tickets. If you want to look at the current list of prizes then go to the WAT website

£10 worth of tickets will be in the summer Newsletter. Buy them all if you can – don't forget you can sell them to family, friends, work colleagues and neighbours too – and if you can sell more all you need to do is to give Michael Wright a phone call, or use the Trust's general telephone number. We do appreciate that some of you, for various reasons, simply do not buy Draw tickets but it is easier to send a few tickets to all Members rather than to try to work by exception. You could always give a donation if you don't want to buy tickets!

The counterfoils and money must be returned by **Saturday 22 August 2015** and the draw will take place at the Restoration Open Day at Drayton Beauchamp on **Sunday 6 September 2015**.

Please do not send the tickets back and keep the counterfoils, the tickets are just the purchaser's receipt. Cheques to be made payable to *Wendover Arm Trust* and please put your address on the back of the cheque; any problems we can then resolve with you. Please don't send cash through the post.

Draw promoter: Michael Wright, 54, Meadowcroft, St. Albans. Herts. AL1 1UF ☎ 01727 860137

This is Geri. . .



So, what's a picture of Geri (short for Geraldine and a play on Tom and Jerry – Jerry was the mouse!) doing gracing the pages of a canal restoration society's newsletter? It's a strange connection but it's one between pet insurance and fund-raising.

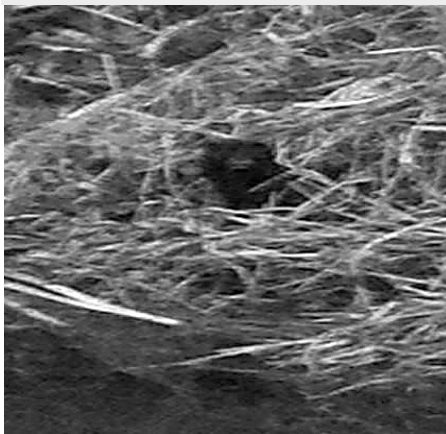
I put this to the test when I wanted insurance for my new moggy. By going onto the Easyfundraising website (see p8) and then onto the desired insurance company's site, for a £140 premium I got a donation of £9.50 for the Trust.

Most of us will have insurance renewals each year, so why not try renewing yours through Easyfundraising? It's free to use and the donation is made by the retailer so you don't have to do anything to transfer it to the Trust and, better still, as a donation, it's GiftAidable.

Simples! And remember, every little helps!

Katherine Deany

FLORA AND FAUNA OF THE CUT



Well, it's not much of a photo but Carl Gosling who took it between Wendover Wharf and the old railway bridge said he only had a few seconds before it saw his dog and then vanished. 'About 20cm high, what did I see?' he asks. We've put this to CRT's ecologists who feel sure that what Carl spotted was a mink. Any other sightings anyone – and clearer pictures?

CANAL AND RIVER TRUST NEWS

Vicky Martin will join CRT as South East Waterways Manager on 20 April. Vicky is an experienced attractions manager who has worked for a wide range of heritage, countryside and leisure attractions in the Midlands, Yorkshire and Cornwall and is currently the General Manager for the Orbit in the Olympic Park.

Neil Owen, who has been doing a sterling job holding the fort for an extended time since Jeff Wyatt was promoted returns to the asset management and performance team

BACK TO THE FUTURE

MMCXCIII by Bernard Banfield

Extractfrom the President of Europe's Engagements Calendar for May 2193

....."The President will visit the State of Britain to celebrate the 400th year of its canal system One item on his water-borne tour will be a cruise along the environmentally attractive Wendover Canal, once known as the "Wendover Arm", in the Chiltern Hills."

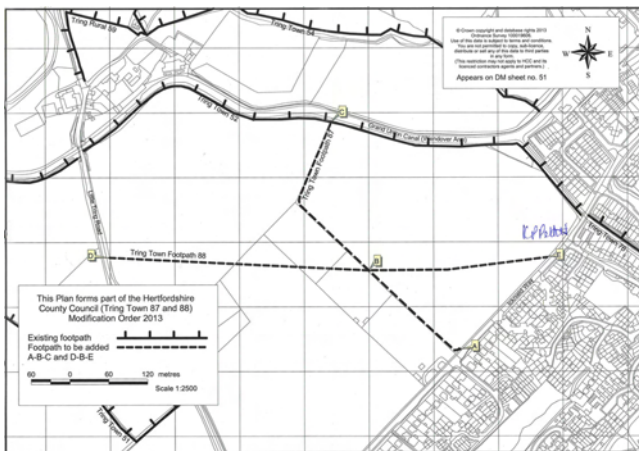
Documents lost in the mists of time preclude a detailed history, but it appears that this canal was derelict during most of the nineteen hundreds, when a group of water enthusiasts, colloquially called "Watters", reopened the waterway as far as Wendover. A century later the Arm was extended westwards by another group of devotees to join a canalised River Thames at Chearsley, and so along the Presidential cruise route to Dorchester, before continuing up the River Thames to the main quattrocentennial Celebrations at Oxford and Stoke Bruerne.

TRING NEWS

Hertfordshire CC is making an order for two footpaths (shown as the dotted lines on the plan, right) that go across what we all know as 'The Festival Field'.

There have been objections to the plan and it went to Public Enquiry on 17 March.

Outcome awaited.



EVENTS UPDATE

A big **THANK YOU** to all who helped at our 2014 events.

The list of booked events for 2015 is shown in the panel on the right and there may be more as we become aware of what's going on in the locality.

Jenny Brice has volunteered to act as 'Chief Grip' to organise the rota of helpers at each event so get in touch with her (before she starts to 'persuade you!') if you would like to help to man our stand and promote the aims of the Trust at any of this year's events. You can contact her at:

jenny@johnbrice.co.uk

or ring **07907 609886**, or the Trust's general number: **07547 181857** – you may get the answering service but, leave a message and we promise someone will get back to you within 24 hours.

New volunteers are always needed and welcome; no experience is needed, just a friendly face! You only need commit to a couple of hours on the stand, it makes all the difference if everyone does a little bit.

As well as manning the stand we also need help to set up and dismantle – and to sell Grand draw tickets please contact me, Martin Bird at:

events@wendoverarmtrust.co.uk

or phone one of the numbers above to volunteer your time.

If you know of an event that you think we should attend please contact me

Martin Bird

2015 EVENTS

So far this year we have booked to take our stand at the following shows/events

Monday 4 May

Aldbury Spring Fair

Saturday and Sunday 16-17 May

Rickmansworth Festival

Sunday 21 June

Marsworth Festival – Startop Farm

Saturday 27 June

Tring Carnival

Saturday 11 July

Leighton Buzzard – Linslade Carnival

Saturday 25 July

Linslade Canal Festival

Sunday 13 Sept

Halton Village Festival

Saturday 21 Nov

Wendover local produce market

TBC

Tring Local Farmers Market

In addition there will be our own two Restoration Open Days at Drayton Beauchamp church:

Sunday 7 June

Guided tours, refreshments, parking

Sunday 6 September

Guided tours, refreshments, parking and the GRAND DRAW 2015

NEW COUNCIL MEMBERS' PROFILES



Clive Wilson

As your new treasurer, I see my role as being primarily to keep the council fully informed and up to date with our financial situation and its implications for the future progress of the trust as well as overseeing the smooth running of our various accounts.

I have had previous treasurership duties with Potton Rugby Club and 1st Potton Scout Group and currently with Potton Golf Society, so its not surprising to know that Potton is my home town. Unfortunately it happens to be fairly remote from where the 'action' is.

I am semi retired having spent most of my life 'at the drawing board' in engineering with previous spells in the concrete business and in, what was then, The War Office. My spare! time has always involved sport, currently playing golf and cricket and with some involvement with Biggleswade Rugby Club and Hertfordshire over 70's cricket team.

In conclusion then I hope that this new role for me will relieve the directors of the extra work they have had to take on and I know working with them will be an utterly satisfying experience for me.

Charlie Carrington

I am semi-retired having worked in regulatory compliance for the last ten years of my career. My speciality is the transport of hazardous materials especially radioactive material. I have worked both national and internationally in helping set the regulations and voicing industries' perspectives. When working I was the Station Manager of the on-site fire crew. Hopefully this gives me the knowledge and the practical skills to ensure that we have the correct level of health and safety when working in the cut and the correct paperwork to back this up.

My other interests are the sound and lighting for amateur dramatics and old vehicles.



The Wendover Arm Canal

RESTORATION



A BRIEF GUIDE



Wendover Arm Trust

Additions to our range of literature

Two new leaflets have just joined our range.

◀ On the left is a brief guide to the past, present and future restoration of the Arm and is an abridged version of the restoration booklet that will be published this year.

On the right is a ▶ guide to fishing on the Arm, what fish you may expect to catch and where you might find them. This leaflet has been produced in conjunction with The Tring Anglers

The Wendover Arm Canal

FISHING



Wendover Arm Trust

The Tring Anglers



Excellent Boats on a Beautiful Canal

Our base at Linslade is within weekend reach of the Waterways Museum at Stoke Bruerne, or the Chiltern Hills and Aylesbury. Choice of exciting one- or two-week cruises including the Thames. 35 luxury boats, 2 to 8 berth.

Boat Builders - Repairs - Dry dock - Blacking - Repaints
Waterside holiday cottage

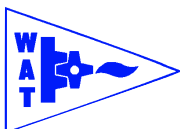
The WYVERN SHIPPING Co Ltd

Rothschild Road, Linslade, Leighton Buzzard, Beds, LU7 2TF
Tel: 01525 372355 Fax: 01525 852308

<http://www.canalholidays.co.uk> james@canalholidays.co.uk

Members of IWA, APCO, BMF, B&MK Waterway Trust, Wendover Arm Trust, Buckingham Canal Society, Aylesbury Canal Society





Wendover Arm Trust

in association with

St Mary the Virgin, Drayton Beauchamp



You are invited to our

RESTORATION OPEN DAY



- Guided tours of the canal restoration site
 - See our volunteers at work
 - Teas and cakes for sale
 - Sideshows
 - Ice creams

Free admission, donations welcome

Car parking at St Mary's Church, Drayton Beauchamp, HP22 5LS

SUNDAY 7th JUNE 2015
12.30 to 4pm

More details: ☎ www.wendoverarmtrust.co.uk
☎ **07547 181857**



WAT Shop

Shop: www.wendoverarmtrust.co.uk/shop.html
✉: www.sales@wendoverarmtrust.co.uk
☎: Questions? Call 07860 286155

This is the first edition of the WAT Shop Catalogue. Catalogue is a grand title for only 7 or 8 items, but we are busy researching and adding more products, each of which will be shown on our website as they are available.

Anything you buy will contribute to our work rebuilding the Wendover Arm of the Canal.

Ways to buy:

- >> post your order form and payment (see address on the order form)
- >> buy online at www.wendoverarmtrust.co.uk with your credit/debit card, or use paypal® account
- >> call 07860 286155 if you have any questions or problems



A Brief History
16 page History of the
Wendover Arm
(abridged version of **The
Wendover Arm – A Brief
History**) Illustrated
Size 21 x 15 cm

WAT 020

£4.95
incl p&p



Waterway comes to Tring
History of the Wendover
Arm from 1792 to 2013
78 pages
By I Petticrew & W Austin
Illustrated
Size 30 x 22 cm

WAT 022

£11.95
incl p&p



Lapel Badge
Enamel badge in bright
nickel finish 33x23 mm
with WAT Logo and
butterfly clip

WAT 005

Special: Buy 2 for £10
Including p&p

£5.25
or 2 for
£10
incl p&p



Water from Wendover
Updated 2nd Edition of
Shelley Savage's full colour
booklet giving a detailed
guide along the Arm
Size 21 x 15 cm

WAT 023

£6.50
incl p&p



**Greeting Card +
envelope**
Shows Wendover Wharf
in the 1890's by A Paine
Inside blank
Size 21 x 15 cm

WAT 024

10 for
£9.95
incl p&p



Tea Towel
100% Cotton Map
Showing Wendover Arm
with places of interest
Washable and Colourfast
Size 18 x 30 inches

WAT 011

£5.95
incl p&p

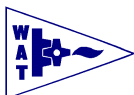


Key Fob
Quality Leather-look
Key Fob with removable
WAT Contact details

WAT 014

£5.75
incl p&p

Watch this space (or look online) for more items in
the coming weeks and months



Wendover Arm Trust

☎ 07860 286155

✉ sales@wendoverarmtrust.co.uk

Order Form

To: **WAT Sales**
c/o 467 Bideford Green
LU7 2TZ

Please supply the following:

	Item Code	Description	Size (S,M,L,XL)	Unit Price	Quantity	Total
1						
2						
3						
4						
5						

Returns: If you are not happy you may return your order at your cost within 14 days of receipt, for a refund of your purchase price. Items must be unused and in a saleable condition. You are recommended to obtain proof of posting as we cannot be responsible for items lost in transit to us. We reserve the right to return items to you if they do not reach us in a saleable condition.

Total	
P & P	
Total	

Name: _____

Address: _____

Telephone and/or email: _____

Signed: _____ Date: _____

Thank you for your order. Proceeds will go towards the restoration of the Wendover Arm Canal.

Please send full payment with your order, which will be supplied typically within 21 days.

How to Pay:

- **By Cash** – typically when buying in person e.g. at an event. Please no cash by post!
- **By Cheque** – made out to **Wendover Arm Trust** and sent (preferably with a copy of this completed form) to the address at the top.
- **Using PayPal®** – You can pay directly via PayPal® to our account 'sales@wendoverarmtrust.co.uk'. Alternatively, use the sales pages on the Trust website to make and complete your purchase. You will not need a PayPal® account to buy via our website. Please use the word 'Sales' and your surname as reference, to help identify your transaction.
- **By Bank Transfer.** Make an **online payment** to our account at CAF Bank, West Malling Branch, Sort Code 40-52-40, Account 00007874. For Payment Reference please quote 'Sales' followed by your surname.
- If you have any questions or problems, **call 07860 286155**