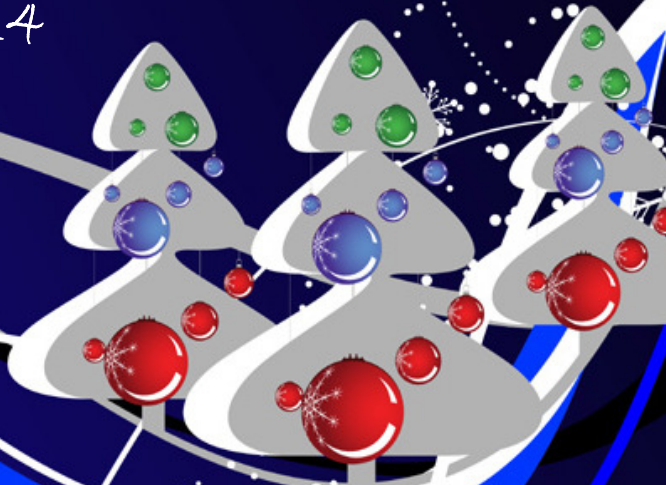




# WENDOVER ARM NEWS

*Newsletter of the Wendover Arm Trust*

A very happy  
Christmas to you all  
and every best wish  
for 2014



*Issue 2013/4  
Winter 2013*

*Price £1 where sold  
Free to members*

## Your contacts on the Trust

Chairman	Paul Leech	<a href="mailto:chairman@wendoverarmtrust.co.uk">chairman@wendoverarmtrust.co.uk</a>
Vice Chairman & Restoration Director	Roger Leishman	<a href="mailto:restoration@wendoverarmtrust.co.uk">restoration@wendoverarmtrust.co.uk</a>
Hon Secretary	John Rowe	<a href="mailto:johnm.rowe@talktalk.net">johnm.rowe@talktalk.net</a>
Treasurer	John Brooman	<a href="mailto:treasurer@wendoverarmtrust.co.uk">treasurer@wendoverarmtrust.co.uk</a>
Assistant Restoration Director	Ray Orth	<a href="mailto:ray.orth@btinternet.com">ray.orth@btinternet.com</a>
Funding Manager	(vacant)	<a href="mailto:funding@wendoverarmtrust.co.uk">funding@wendoverarmtrust.co.uk</a>
Publicity Director	Nigel Williams	<a href="mailto:publicity@wendoverarmtrust.co.uk">publicity@wendoverarmtrust.co.uk</a>
Webmaster	Chris Sargeant	<a href="mailto:webmaster@wendoverarmtrust.co.uk">webmaster@wendoverarmtrust.co.uk</a>
Newsletter Editor	David Page	<a href="mailto:newsletter@wendoverarmtrust.co.uk">newsletter@wendoverarmtrust.co.uk</a>
Membership Secretary	Katherine Deaney	<a href="mailto:membership@wendoverarmtrust.co.uk">membership@wendoverarmtrust.co.uk</a>
Events Manager	Martin Bird	<a href="mailto:martin.bird@btinternet.com">martin.bird@btinternet.com</a>
Minutes Secretary	Margaret Leishman	<a href="mailto:mleishman7@gmail.com">mleishman7@gmail.com</a>
General Members	John Reynolds	<a href="mailto:scubajr@tiscali.co.uk">scubajr@tiscali.co.uk</a>
	Bob Wheal	<a href="mailto:bob.wheal@btinternet.com">bob.wheal@btinternet.com</a>
IWA Nominee	Jenny Brice	<a href="mailto:jenny@johnbrice.co.uk">jenny@johnbrice.co.uk</a>
CRT Representative	Jeff Whyatt	<a href="mailto:jeff.whyatt@canalrivertrust.org.uk">jeff.whyatt@canalrivertrust.org.uk</a>
Website		<a href="http://www.wendoverarmtrust.co.uk">www.wendoverarmtrust.co.uk</a>
General telephone number:		07547 181857

**BARTON**  
**PETROLEUM**

**[www.bartonpetroleum.co.uk](http://www.bartonpetroleum.co.uk)**

**For all commercial and residential fuels**  
**01923 233171**

## CHAIRMAN'S COLUMN

'May you live in interesting times' is a familiar Chinese curse. Well, it hasn't proved so disastrous for my first year as your chairman. Interesting? Definitely but climbing up that familiar learning curve has been challenging and rewarding. We certainly live in changing times and the challenge is plain to see. As I said in my report to the Annual General Meeting at the end of October we are facing a monumental challenge in regard of fund-raising for the works to complete our restoration. Roger eloquently and concisely pointed us in the exact direction when it comes to the size of the task and now we all have to rise to that challenge in support.

Council has decided to engage a professional fund-raiser but we need to provide a focus – a Fund-raising Director/Manager/Supremo – call it what you will. I decided that was so important that I split my formal AGM report in two and reserved the second half for an impassioned plea for help, not only for the

fund-raising role but right across the piece.

So let me voice that challenge again to all our members and friends. The Trust, to complete its work in reasonable time scales, needs help for many activities large and small. The need for a Fund-raising Supremo is paramount but we need all sorts of participation to enable us to undertake all those day to day tasks including helping Martin Bird with events (we do need to be present at as many as we can muster so that the WAT flag can waved vigorously), the redevelopment and management of our Sales activities and spreading the load on our Restoration team. If you have some spare time and are willing to share it please speak with any of the Council Members. If you know someone who is not a member but has skills and time please help us with some recruiting. It may come as a surprise but a little bit of effort can generate a lot of fun. I am a great believer in the power of fun to get things done.

*Paul Leech*

## From the Editor

Once again, a very brief Editor's piece (do I hear an almighty shout of Hurrah!?) – at least I've managed to shoe-horn in one of my recipes.

You can see from this issue steps Council is taking to improve our funding and our public presence (Wave the Flag as Paul says) and as well we have just contracted an advertising professional to try to get advertising to offset the costs of the Newsletter and in the next issue I hope you'll start to see the results of this. That's it Folks, Happy Christmas. *David*

The views expressed in this journal are those of the contributors and cannot be taken as those of the Council of the Wendover Arm Trust. Whilst all reasonably practicable steps are taken to confirm the accuracy of any statements herein, no liability can attach to the Editor, or the Council of the Wendover Arm Trust, or any contributors for any errors and neither the Editor nor the Council of the Wendover Arm Trust accept any responsibility for any consequences however caused.

The Wendover Arm Trust, Registered Charity No.801190 Registered Office: 66 Bryants Acre, Wendover, Bucks HP22 6LA Website: [www.wendoverarmtrust.co.uk](http://www.wendoverarmtrust.co.uk)

## COPY DATE for Spring issue – 20 February 2014

# MEMBERSHIP UPDATE

## **Important Information about Gift Aid – please read . . .**

HMRC introduced a new Gift Aid declaration as described in the Summer issue of Wendover Arm News. The Wendover Arm Trust together with all other charities is required to get all its members to sign the new declaration for all future donations. You will find a new form enclosed with this newsletter (unless you are one of the members who has already completed a new-style form.)

Gift Aid is a valuable extra source of income for the Trust. On average, we receive around £3,000 per year from HMRC, so all the individual donations and subscriptions add up to give the restoration funds a useful boost, at no cost to the donor.

### **The ‘new’ declaration:**

*‘I confirm I have paid or will pay an amount of Income Tax and/or Capital Gains Tax for each tax year (6 April to 5 April) that is at least equal to the amount of tax that all the charities or Community Amateur Sports Clubs (CASCs) that I donate to will reclaim on my gifts for that tax year. I understand that other taxes such as VAT and Council Tax do not qualify. I understand the charity will reclaim 28p of tax on every £1 that I gave up to 5 April 2008 and will reclaim 25p of tax on every £1 that I give on or after 6 April 2008.’*

### **Frequently asked Questions:**

#### **Surely this is bureaucracy gone mad?**

You could say so! However the declaration now asks tax payers to confirm that

they pay sufficient tax above the level of their donation. It also distinguishes between different types of tax paid, for example income tax, council tax, VAT and capital gains tax. Not all of these taxes count.

For example, you make a £100 donation to a charity during the tax year. To be eligible for Gift Aid, you must pay more than £100 in income tax to qualify. This total is the amount you donate to all charities not just this one.

#### **OK, what do I need to do?**

If you are still eligible for the Gift Aid scheme and wish to be part of it, please complete the enclosed declaration and either post it to Katherine or scan and Email it.

#### **We have family membership, so do we both need to sign?**

No, if both individuals pay tax then it doesn’t matter who signs the declaration. If only one individual pays tax, then this person must sign the declaration for it to be valid. We can only claim Gift Aid from one person, not a couple.

#### **What if I do not qualify or do not want to join Gift Aid?**

No problem, it would help Katherine to know this, so we do not claim gift aid on your donations.

#### **What’s not allowable?**

Gift aid can be claimed on membership subscriptions and donations. It cannot be claimed on club 100 lottery subscriptions as this is a form of gambling and is disallowed for Gift Aid.

Thank you for your help.

## Donations

We have received a further £103.40 from Rose Bennett from the Bric-a-Brac stall she organises at Dunstable and District Boat Club.

The total Rose has raised so far from this venture is £1734.

Well done Rose – and the members of the boat club. Keep up the good work.

IWA North and East London Branch has donated £300.

## New Members

We welcome as members

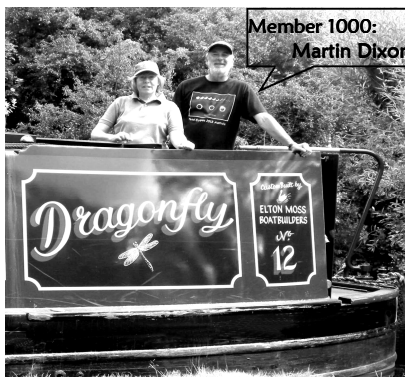
**Mr and Mrs Liles** from Aston Clinton  
(joined at our Open Day on 8 September

**Mr Martin Dixon** from Ascot (web-joiner)



who writes:

'I'm delighted to be your 1,000th member. I grew up within walking distance of the Barnsley Canal and fell in more than once. My wife Linda and I have a share in the narrowboat Dragonfly, currently moored at Welton Haven. I have a special interest in canal tunnels (and I know there are none on the arm!) We live in Ascot and would love to see the Slough Arm-to-Thames link constructed (but obviously after the Wendover Arm is fully restored). Have also attached a photo of Linda and me on Dragonfly but quite understand you may not have space for this! Look forward to reading the latest newsletter and to meeting up at a future event.'



## Club 100

### Exclusive members-only fund-raising lottery

Club 100 is a fund-raising cash prize-draw lottery, exclusive to Trust members.

£15 per year buys a lucky number that is entered into four quarterly draws throughout the year. To join club 100 contact Katherine.

The total prize fund is approximately half the subscriptions, so the more members, the bigger the prizes! The remaining income goes directly to canal restoration funds.

The **Autumn draw of 2013** was made at the AGM on 30 October. There were 158 lucky numbers in the draw

The prize winners were:

<b>1st</b>	<b>Mr B Martin</b>	<b>£189.60</b>
<b>2nd</b>	<b>Mrs O Shaw</b>	<b>£79.50</b>
<b>3rd</b>	<b>Mr G Watts</b>	<b>£31.60</b>

Congratulations to our winners and we hope you enjoy your prize money

# RESTORATION NEWS

Adapted from Roger Leishman's restoration group's newsletters



Reproduced by kind permission of cartoonist Brian Reading and Wendover News

**We'll leave you to put names to the faces of the volunteers but here's what they're doing to get to Wendover:**

## October 2013

Thanks to the weather holding up another 20 metres of canal lining was completed. The bank lining for Stage 2 is now complete, only 30 metres of bed lining need to be finished before Stage 2 is 100% complete.

You will see from the progress report below that Stage 2 has cost £438 per metre exclusive of overheads. Stage 1 cost £400 per metre; the increase is mainly due to the much slower progress in Stage 2 because of bad weather conditions; time spent pumping out water is not real progress nor is working in up to a foot of mud and water!

For stage 3 we will have to purchase more Bentomat; thus far we've been using the material purchased in 2008 and we may expect the next batch to cost more.

We were fortunate in having a weekend visit from WRG(BITM) in October to work

on the construction of the footpath/nature trail from Bridge 4 to Whitehouses.

## November 2013

Progress on the lining of Stage 2 was virtually completed in November despite delays due to pumping out water as the weather again had deteriorated – as can be seen in the photos in this issue. Only a few metres of bed lining are outstanding but cannot be completed as they are part of a 20 metre roll that cannot be laid until at least 20 metres of Stage 3 bank lining is completed. We are now round the corner and have bridge 4A in sight!

➡ See November pictures on rear cover

## 6-monthly Progress Report

The final cost of Stage 2 is £153,178 but this is based on the estimated cost of the last 30 metres of bed lining and may be subject to minor correction when all the invoices are to hand.

We have now 'honed up' our re-lining process thanks to suggestions from our volunteers and can complete 20 metres of lining or 40 metres of pipe capping in one working party. There are some 900 metres of pipe capping required and 1400 metres of lining to reach the bund at Little Tring. On this basis there are at least 93 months/8 years of work plus delays due to bad weather to complete Phase II. This indicates completion of Phase II around 2022 subject to raising of the necessary money. Given the current budget of £1.2m for Phase II less £450k already spent and £400k already in the bank another £350k plus inflation needs to be raised. This is based on volunteer labour so, bearing in mind our ageing volunteer work force and few new volunteers coming forward, work may have to be put out to contract; this would significantly raise the estimated cost to completion although it would reduce the timescale.

The Restoration Committee has discussed how to carry out productive work during bad weather when it is not possible to work in the Whitehouses area. One proposal is to rough-profile the banks from the cart track entrance at Little Tring towards Bridge 4 and at the same time create a roadway on the off-side cambered towards the towpath side with a level ditch alongside draining into the manhole on the pipeline.

We now have about 100 metres of Stage 3 lining, including the concreting through Bridge 4A narrows, to complete before the next re-watering. At our present rate of progress this is five one-week working parties so allowing for

two missed weeks due to bad weather this would bring us to May/June 2014 for completion, leading to a possible re-watering in July next year.

We are to meet with CRT to discuss their work at Whitehouses, the bank strengthening from Buckland Wharf to Wendover and the blocked state of the canal from Drayton Beauchamp to Wendover including the fallen tree near the sump at Drayton Beauchamp (a potential dam).

### **Peter Winter**

We are sorry to see the departure of Peter Winter who is moving home. He has been Chairman of IWA Chiltern Branch and the Editor of *Grapevine*, the Branch's newsletter, and one of our regular

restoration volunteers for several years.

Many thanks for your hard

work Peter. Your plaque will ensure that you are not forgotten.



### **Theft of seat plaques**

The Trust's Restoration Committee have researched possible replacement plaques and have proposed a composite plaque of hard plastic between two layers of aluminium with powder coated lettering. It has bevelled edges and can be secured with high security stainless steel screws. The look is very smart and should be suitable. This has been accepted by Council and the plaques will be obtained and fitted.

## FUND-RAISING

### Appointment of a professional fund-raiser

Council has decided that renewed efforts need to be made to secure funding for completion of the restoration of Phase II (Drayton Beauchamp to Little Tring where Phase I is complete) and to tackle phase III (Drayton Beauchamp to Wendover). Much of our income for the restoration so far has come from the annual Canal Festival held on the Arm at Little Tring but this has not been possible since 2011.

The Trust has already expended some £450k on phase II and has funds available to complete about half the remainder, on the basis of continued use of volunteer labour. With volunteer labour about £400k more is needed, more if we cannot get sufficient volunteers and have to turn the job over to contractors – the other side of the coin here is that contractors could complete phase II much more quickly than the eight to nine years that it will take our volunteers.

Phase III, from Drayton Beauchamp into Wendover basin is estimated at £2.6 million at today's prices.

Council concluded that it alone could not contemplate the raising of

£3M in reasonable time and so, after due consideration, enquiries and diligence has appointed a professional fund-raiser to take on this task for it. In addition Council is seeking to appoint a volunteer as a funding manager to be the link to Council and to manage other tasks associated with fund-raising and our public profile and you will find the 'situations vacant' advert on p19. Bob Wheal who was our 'Mr Funding' and ran the very successful 'BlockAid' campaign now wants to step back from this and concentrate on other matters.

It's early days yet but in future issues of the Newsletter we hope to be able to report on progress and that this will be wholly positive.

Appointment of a professional does not mean that we can relax our efforts to raise funds ourselves. Our own efforts may not generate mega-money but what we can get through membership, donations, Golden Giving, Easyfundraising (see below), Walk-an-Arms-Length, Restoration Open Days, produce sales, bric-a-brac stalls and the like all add to the pot and are most welcome.

### Easyfundraising

We are anxious to explore as many avenues as possible to fund completion of Phase II. We need to find a further £400K to complete, in addition to the sum already expended and funds we

have secured through our efforts.

We have therefore joined  
**EASYFUNDRAISING**  
and you could help us  
**AT NO COST TO YOURSELF!**



This is a free way of raising money to swell our funds simply by shopping online – there are over 2,700 Retailers subscribing to the cause including Argos, John Lewis, Amazon, Late rooms, Apple Store, Debenhams, Next, M & S, Aviva, AA, More Than insurance, Vodaphone, Orange mobiles – the list goes on . . . An A-Z of all retailers may be found at

[www.easyfundraising.org.uk](http://www.easyfundraising.org.uk)

The amount of donation is listed against each retailer and is either a percentage of the purchase price (and it can be up to 5%) or a fixed amount.

### HOW DO YOU DO IT?

Find WAT on-line as follows:

- Go to [www.easyfundraising.org.uk](http://www.easyfundraising.org.uk)
- Go to 'Support a Good Cause'
- Enter 'Wendover Arm Trust'
- Press 'Support this Cause'

- Enter your details
- Install 'Find and Remind' if you wish

Then:

### START SHOPPING FOR WAT!

An additional benefit is that the donation is effectively from you not the company from which you buy so, if you are a tax payer, your donation can be gift-aided and the Trust can reclaim the tax. In this case what you do after registering is to:

- go to 'my account'
- scroll to 'settings'
- then register for gift aid

Just think. . .the Trust has around 650 members. If only half register for Easyfunding and each only purchases £500 of goods a year at 2% donation that's over £4000 (including gift aid recovered) without having to make any effort at all. Our thanks for your support.

## WAT Silver Jubilee Year 2014

Council at present is thinking seriously about how we can mark our special year. Obviously one of the events is likely to be the re-watering of the next section up to bridge 4A and it wants to make a big splash of this – possibly by organising another Restoration Open Day of the sort we initiated this year, with a suitable celebrity or dignitary to open it and with the maximum possible publicity – press, radio, TV.

Another possibly is a 'Silver Jubilee' 'Walk-an-Arm's'-Length event.

But, what else should the Trust do to mark the year? If any of our readers has any seriously bright ideas then Council would be glad to know about them and we ask you to contact any of Council listed on p2 or phone us on the general contact number



# WAT Grand Draw 2013

**Congratulations to all the winners**

**And a big thank you to all the supporters of the 2013 Grand draw.**

Now the event has passed and I am able to get my breath back, it is time to think, 'What have I forgotten?' I should say a big thank you to all the supporters that sold tickets and thank you to all the supporters that bought tickets. All I know at present is that the restoration fund has been increased by over £3000\* but I also know that it cost £400 per metre to restore the canal.

It has been an experience of human nature opening all the envelopes that arrived each day. I am unsure that the person that returned the tickets rather than the counterfoils really meant to. It was a 'cash' transaction, rather than a cheque so I am unable to identify who it was, but it has been considered as a 'donation'. More than one person sent the counterfoils without a cheque. That I can deal with. People have sent cheques payable to me and I did have one cheque payable to another waterways organisation! I had a cheque payable to WAT and WAT counterfoils from a friend at the IWA who was also promoting a Draw.

There was only one thing that kept cropping up in my mind and that was what if the pennant cake, which was a Christmas cake mixture weighing several pounds had been won by a ticket

holder in Manchester? How could it be delivered? Fortunately, it was won by a member that lived but a mile from Drayton Beauchamp.

Other dilemmas were: how do you explain to a gentleman that his 'prize' is a ladies handbag! Or to another gentleman that he has won a lovely crystal necklace and matching earrings! I think the gents have ready-made Christmas presents. The best result was when I discovered that the Tiger Cub Fleece Throw had been won as a present for a six-year-old girl – better than a teddy bear I say . . .

The Trust is greatly indebted to our major prize sponsors; Wyvern Shipping Co Ltd; Grebe Canal Cruises Ltd; Beryl and Barry Martin; Boots the Chemists. We are so grateful for their support. I am also very grateful to Bob Wheal, the previous Promoter, who has given me support over the period of my initiation into Draw procedure. Big thanks also to those few members that visit waterway rallies and the like to sell Draw tickets. But again thanks to all our supporters.

Michael Wright

(\*the total announced at the AGM was £3581)

## RESTORATION OPEN DAY – 8 SEPTEMBER

The weather wasn't as bright and sunny as the day of our first event in June but it nevertheless attracted around 150 people. As well as a number of groups who went to see the workings to have the work of restoration explained to them by Roger Leishman, the 2013 Grand Draw was run, the church was open for visits, copious cups of tea and slices of cake were consumed and our merchandise was on offer. The Trust's thanks go to Revd Liz Moxley and her staff for allowing us to use the church grounds.



The local chapter of the Riley Car Club departs



At the restoration face:



Michael Wright helps the Mayor of Tring, Mrs Roxanne Ransley, to pull the winning tickets in the Grand Draw



It's over there. . .



Roger explains how the Trust is restoring the canal

. . .and it's over there too!

## Grand Draw 2013 Prizes and Winners

The draw was made by the Mayor of Tring, Mrs Roxanne Ransley, at the Restoration open day on 8 September. It took place a little later than scheduled due to the Mayor's extended tour of the restoration site and the detailed talk by Roger Leishman, Restoration Director. Her extensive knowledge of the Canal and it's history put me in my place!

**First Prize:** Ticket 004330 Mrs P Preston  
**A week on a canal boat** donated by Wyvern Shipping Co Ltd.

**Second Prize:** Ticket 00704 Sue Foster  
**Day boat hire** donated by Grebe Canal Cruises

**Third Prize:** Ticket 008979 Mrs Wright  
**£100 Cash Prize** donated by Mr & Mrs B Martin

**Fourth Prize:** Ticket 002800 Mr I Bain  
**Balloon Flight** with Virgin Balloon Flights.

**Fifth Prize:** Ticket 014529 David Ambler  
**Swarovski Crystal Necklace.**

**Sixth Prize:** Ticket 002236 Ellis  
**£25 Garden Centre Voucher**

**Seventh Prize:** Ticket 004552 John Savage  
**Wendover Trust Fruit Cake**  
*➡ See picture on rear cover*

**Eighth Prize:** Ticket 007054 Julian Webster  
**Boots Hairdryer**

**Ninth Prize:** Ticket 019782 Nick Farr  
**Ladies Handbag**

**Tenth Prize:** Ticket 002936 Zoe Stevens  
**Tiger Cub Fleece Throw**

## Canal Neighbours' News

News from our canal neighbours

### Aylesbury Arm:

CRT says the work to renew lock 12 will be completed by 25 November so, by the time you read this, it may be possible to have a winter cruise down the arm.

### Bedford and Milton Keynes Trust:

Is delighted with its new trip boat the John Bunyan. According to the Trust's October newsletter in the first ten weeks of operation there were over 2000 passengers making £13,000 for the Trust. It runs on the Ouse in Bedford and you can find out more on the Trust's website: [www.b-mkwaterway.org.uk/bedford-community-boat/](http://www.b-mkwaterway.org.uk/bedford-community-boat/)

### The Buckingham Canal Society:

Has recently re-watered a 400m section of canal at Bourton Water near Buckingham; the opening of this section was done by Buckingham's MP John Bercow. The Trust hopes to re-water a similar stretch at the other end near Cosgrove within the next few months. You can see pictures of the re-opening and maps on the Society's website: [www.buckinghamcanal.org.uk](http://www.buckinghamcanal.org.uk)

### MERCHANDISE MANAGER

Jill Pearce our merchandise manager has called it a day so the Trust is in need of a replacement.

If there's anyone out there who is prepared to join Events' Manager Martin Bird's team and be responsible for merchandise please get in touch with him. (Email on p2)

## People in the news

### New Council Member's Profile

**Events Manager** Martin Bird is London born, towards end of WWII, and moved to Welling, Kent in 1956.

He served an apprenticeship with Rolex Watch Company, worked for various companies, then joined PO Telephones, wot is now BT, he says, as a telephone engineer. Was made an offer that his wife and he could not refuse at the turn of the century so, he says, 'I sat around, went back to BT as a contractor then became an industrial civil servant, working as a store-

keeper at the Army Training Regiment in Basingbourn, Cambridgeshire.'

From a very early age he had an interest in boats and boating and joined Sea Cadet Corp at eleven then went on to join the Royal Naval Reserve leaving at the end of the cold war.

He doesn't own a narrow boat; however has been lucky enough to be able to borrow his brother's [NB Mollie Lane] from time to time.

➡ Martin's picture is on p19

## WAT AGM REPORT

The AGM took place on 30 October at The Clubhouse of Dunstable and District Boat Club.

The AGM itself passed off almost without problem; almost as your editor had forgotten to print the minutes of the 2012 meeting so the Secretary then had to read a synopsis to the meeting and seek its approval (given, *nem con.*) Other reports were agreed unanimously.

The present councillors were re-elected and those co-opted during the year were elected; no vote was necessary as the total number standing for council was less than the maximum permitted by the constitution.

Paul's Chairman's report is largely reported elsewhere in this issue.

Following a buffet supper Roger Leishman presented a talk entitled '*The Restoration of the Arm, A Journey down*

*Memory Lane 1968-2013*' a comprehensive review of the final years of the decline of the arm (including the demolition of Little Tring Bridge) followed by the progress of the restoration under the aegis of the Trust and his hopes and plans for the future.

Donations towards the cost of the food resulted in a surplus of £48 and the raffle raised £184.

The Trust's thanks go to DDBC for allowing it to use it's facilities for the AGM. In particular thanks to those Club members in attendance who are not WAT members for providing cover at the meeting.

*Post-meeting note:* as required by its constitution, at the first meeting of Council following the AGM, the officers of the Trust were elected. The posts are as shown in the contacts list on p2.

➡ Pictures from the AGM on back page

## IWA 2015 Calendar Photo-Contest



*Photo acknowledgement: IWA*

IWA has launched its 2015 Calendar Competition.

At its November meeting Council decided to invite the Trust's members to send it 'great looking photographs of UK waterways' (they don't have to be of the Wendover Arm, but it would be super if they were) to be judged and the best submitted to IWA for possible inclusion.

Council needs photographs by 15 January 2014 as IWA's closing date is 31 January.

You can send your photos (can be more than one) by Email to either the Webmaster, the Newsletter Editor or the Membership Secretary (*Email addresses on p2*). Please include a brief description of

the waterway location when uploading. Photos for the Calendar need to be digital with a resolution of at least 300 dpi and at least 2100 pixels x 1500 pixels and can be landscape or portrait format.

**Please note:** Photos may be used by IWA for publicity purposes, on its web site, in marketing material, its Annual review or as part of the IWA Calendar. Any photos selected for use will be credited where possible. IWA is offering three free calendars to the photographers whose photos are used in the final calendar.

**The Trust** would also want to use any photographs that make it to the Calendar (with appropriate acknowledgement) as part of its publicity drive

### WANTED

Used stamps, petrol coupons, phone cards and empty printer cartridges to sell for money for canal restoration funds.

Send to:  
IWA / WRG Stamp Bank  
33 Hambleton Grove  
Milton Keynes  
MK4 2JS

### THANK YOU

The sale of Ron Pittaway's tools and a load of his scrap metal donated to the Trust by Enid has raised

**£300**

Thank you, Enid, for the donation and thank you to all the members who bought items.

## Moving Moorings – a Winter's Tale

For many years I have moored my 50ft narrowboat, Carianne, bankside at Marsworth, having previously cancelled my mooring at a nearby marina when I discovered they were using the same hose for filling water tanks and rinsing pump-outs!

Geographically this area suited me owing to business connections in the vicinity and only about 18 miles from my house in Oxfordshire. However, just prior to retirement I

decided to join the Thrupp Canal Cruising Club and put my name on their mooring list – largely dead man's shoes! Their attractive base on the South Oxford was only another three miles from my house and produced possibilities of venturing onto the Thames and also the K & A – neither of which I had cruised in my boat. My wife was finding operation of some Grand Union locks very difficult – last autumn four adults were needed to shift one gate on the Buckby flight. . . the decision to move when possible was finalised!

In October 2012 the Moorings Master at Thrupp telephoned me and offered a mooring which, after viewing the location, I accepted. The mooring was available from the end of the month. Plans were made for a departure from Marsworth on 24 November and a friend was press-ganged into helping. We de-winterised, and cleaned

the boat, stores were placed on board and everything was ready when, with less than twenty-four hours to go, CRT Emailed two stoppages on our route owing to excessive water. Everything

was put on hold and I decided to leave everything until 2013 so the boat winterised again. The Club was very understanding as another new moorer was also stuck in the north with similar problems. They found a temporary winter moorer

which was helpful as otherwise, I should have been paying two mooring fees.

A new date for March 1 was chosen and the original crew-member volunteered his services and, in addition, I persuaded my former business partner to help with the first day to Leighton Buzzard – three men in a boat! Lightning was to strike twice – once again a day before departure. I discovered that one of the Braunston locks was closed for repairs and would not re-open until 9 March. Rather than cancel the trip for a second time I decided to go ahead and leave the boat somewhere secure for about three days. A phone call to Weltonfield Narrowboats solved the problem.

On day two, having moored at The Navigation at Cosgrove, we awoke after to find the boat covered with frost. We tried to cast off and found the boat



*Photo: Carianne – by Nigel Williams*

*...moving moorings – a winter's tale contd.*

could not be pushed away from the bank as the canal was frozen over! Having broken the surrounding ice with our pole we headed north. Thick ice damages hull coatings but blacking was due this year and there was no alternative. After about two hours, with only one other boat on the move, we approached Stoke Locks to find that all ice had gone. The sun had appeared and life was somewhat more pleasant. Another boat appeared, we locked up to Stoke Bruerne together then had an uneventful journey to Weltonfield.

Deteriorating weather with biting cold wind and snow prevented the planned departure on 9 March, in fact it was another three weeks before the onward trip to Thrupp could be contemplated. My wife volunteered for the last leg and we left Weltonfield on 25 March locked down to Braunston with another couple; his wife infuriatingly refusing to walk between locks and insisting on boarding the boat each time, delaying our progress significantly. We discovered they were time-sharers and the husband merely wished to visit Braunston; they winded at the junction and immediately returned to face the locks over again. His wife seemed somewhat annoyed!

Magnificent icicles were hanging from several of the Oxford canal bridges but sadly I hadn't brought my camera. There were further ice covered sections and although the weather was dry it was extremely cold. The wood burning stove was on 24 hours a day as the central heating system had developed a fault (still unresolved despite inspection by an engineer at Aynho Wharf).

A roaring fire was welcomed us in the

bar of the Bridge at Napton when we stopped for the night outside. The young Landlords, Lisa and Nick, apologised that the menu was limited since they had only recently taken over and the LPG supply had developed a leak and had been shut down. Two or three other brave customers were huddled round the fire. The following morning we took on coal at The Folly at Napton bottom lock and also managed to purchase a newspaper. We noted the bottom gates being opened by a CRT volunteer and the retired gentleman remained with us for the first six locks, which was most helpful. His reward was a steaming cup of coffee and a chocolate biscuit! Apparently he works one day a week in the winter and two in the summer. Not another moving boat seen all day even though the sun was shining.

The next night we moored at the top of Claydon locks – the only evening we didn't manage to find a hostelry. Bridge Stores in Cropredy was useful for supplies and a newspaper and, once again, the sun was shining but the towpath was very muddy from melting snow. The night after we stopped in Banbury and ate at a rather expensive Italian restaurant full of youngsters and thinking that wages must be good in the area!

At Aynho Wharf we stopped to make a booking for bottom blacking at the end of the year – now more needed than ever as a result of the ice – and continued to Somerton Deep Lock. Having 90% filled the lock we were taken aback to find a foreign couple on a day-boat from Lower Heyford emptying it and despite remonstrating they simply could not understand our reasoning. Having entered the lock we raised the lower



*...moving moorings – a winter's tale contd.*

paddles and found we couldn't exit since they had moored their boat too close to the entrance. They appeared unwilling to move it so my wife had to take the ropes and deal with the matter. Later that evening, we were moored up by the swing bridge at Lower Heyford and they passed by flat-out and pulled our mooring stakes out with the result that our boat was blocking the canal; this was only discovered when we left the boat in semi-darkness to visit the local pub.

We were welcomed at Thrupp by Adam Tasker, the Warden, and we had a cup of coffee aboard his boat. On-site diesel, pump out, the cleanest toilet on the system, water and electricity adjacent to our boat and a private car park together with a very nice Tea Room and two pubs within walking distance all contribute towards the attractions of our new mooring.

*Nigel Williams*

## Grub-up! - the Editor's cookery column

This time it's a School Meal recipe – and before you go 'urgh' or 'aaaaghhh!' and run a mile let me say it's a super one-pot meal and well worth trying, especially for a cold winter's day. My mum was a school cook and this is one of hers, courtesy Northamptonshire County Council School Meals Service. It's remained a family favourite for almost fifty years.

### CORNEB BEEF HOT-POT

Awkwardly this makes a meal for three as the standard 12oz (340g) tin of corned beef is only sufficient to feed three well.

#### You need:

- 1 x 340g tin corned beef
- 1 x 400g tin baked beans
- 300g rough-chopped tomatoes (tinned or fresh)
- 1 x large onion
- 3 x large potatoes
- 1 x red OXO cube
- 10ml oil (corn or olive)
- Salt, pepper and herbs to taste (we use thyme and oregano)

#### Method:

Heat oven to 180°C. Peel and slice onion and fry gently in the oil until browned. Peel the potatoes and parboil for 10 minutes, then drain and allow to cool. Cut the corned beef into 25cm cubes (tip: this is easier if the corned beef is chilled) and put them into a large casserole. Add the fried onions, tomatoes (tip: if using fresh tomatoes add 10 ml tomato purée unless they are very ripe), beans, crushed OXO cube and the seasoning. Mix together. Slice the potatoes 4-6mm thick, layer them over the meat and vegetable mixture, brush oil onto the topmost layer and season. Cook uncovered for about 45 minutes until the potatoes are golden-brown.

Serve piping hot; nothing more needed as this is very filling. To drink: well, the schoolchildren had water but you can treat yourself to a glass of good malty beer.

# SITUATIONS VACANT

## FUNDING MANAGER

We are actively seeking the services of a volunteer funding manager to assist Council and our recently appointed professional fund-raiser to secure additional funding to enable continuation and completion of the Wendover Arm Canal restoration project

The work will include:

Networking

Liaising with Parish, District and County Councils and other Bodies in order to seek support and publicise our restoration project

Arranging public meetings etc.

Funding is a vital part of our effort to secure restoration of this beautiful canal for the benefit of the general public.

If you feel this vacancy would be something to which you could contribute time and energy

in the first instance make contact with the Trust's Chairman, Paul Leech, Email:[chairman@wendoverarmtrust.co.uk](mailto:chairman@wendoverarmtrust.co.uk)

## Website News

Our website continues to develop and is becoming a comprehensive fund of information about the Trust, what is happening and when.

Visitor numbers are increasing as it becomes better known – please help us by passing the link as widely as you can to spread the word

<http://www.wendoverarmtrust.co.uk>

A full illustrated history of the restoration project is being compiled by Roger Leishman for addition to the website –

From Chris Sargeant, Webmaster

material from our earlier sites has also been retained for future use.

In addition to the website we are utilising both Twitter (@wendoverarm) and Facebook to extend our "reach" to a wider audience.

If you have any news items or pictures which we can use on-line please forward to [webmaster@wendoverarmtrust.co.uk](mailto:webmaster@wendoverarmtrust.co.uk)

Thank you

➡ Website home-page illustrated right



Martin Bird — Events Manager



The Wendover Arm Trust Fruit Cake. . . Yum!



## Wendover Arm Trust

*Restoring The Wendover Arm of The Grand Union Canal*

Patron – David Suchet CBE

Regd Charity No 801190

Contact: Tel – 07547 181857

Webmaster@Wendoverarmtrust.co.uk

[Home](#)

[Where is the Arm?](#)

[Restoration](#)

[Events](#)

[Get Involved](#)

[Donate](#)

[Membership](#)

[Shop](#)

[Links](#)

[Contact](#)



Entrance to the Arm at Bulbourne



Lining in progress



New Little Tring bridge

**The Wendover Arm Trust was formed in 1989 to promote restoration of the Wendover Arm of the Grand Union Canal to bring water from Wendover to the summit of the Grand Union and restore full navigation**





**AGM: 30 October.** Happy smiling faces as our Chairman, Paul, delivers his report

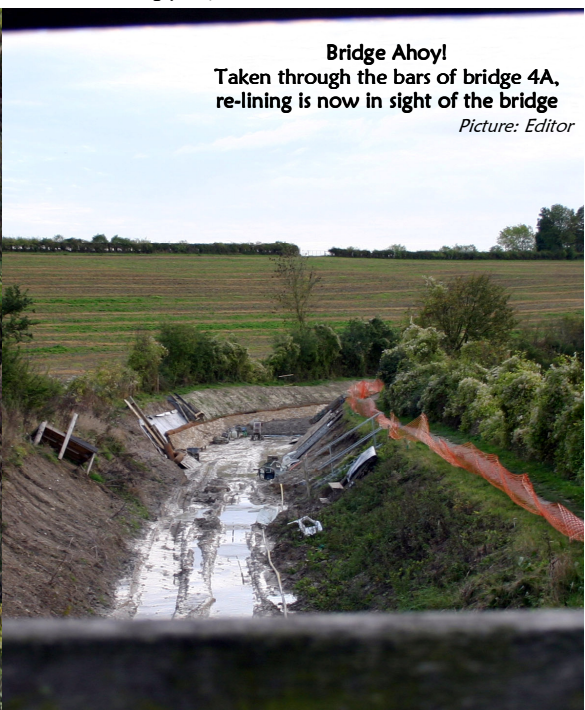
*Pictures: Editor*

### Scenes from the November working party



**The rains return!**  
I asked John to go faster to get a spectacular bow-wave but he wouldn't – spoilsport!

*Picture: Editor*



**Bridge Ahoy!**  
Taken through the bars of bridge 4A, re-lining is now in sight of the bridge

*Picture: Editor*